

# Polybutylene Push-fit Female Backplate Wall Elbow



## PBF 14



### Technical Data

- Working Press@ Temp
  - 17 Bar @ 23°C
  - 10 Bar @ 65°C
  - 6 Bar @ 95°C
  - 3 Bar @ 105°C

### Applicable Standards

- WRAS approved
- IGC 188-2009
- ASSE1061-2011
- NSF/ANSI- 14,61&372-2015
- Not suitable for hot water re-circulation systems

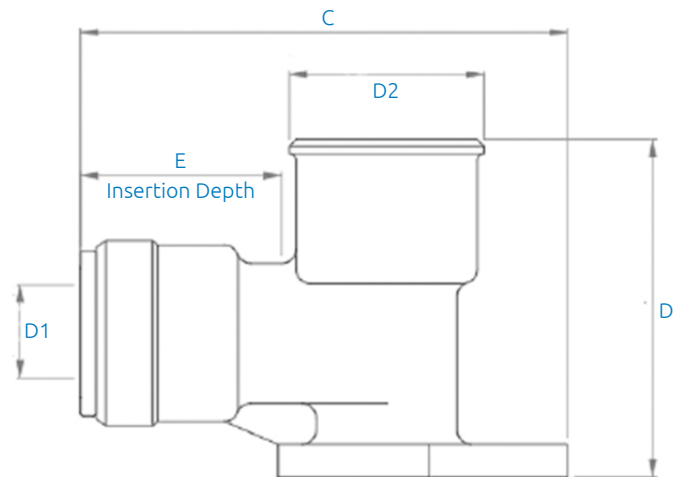
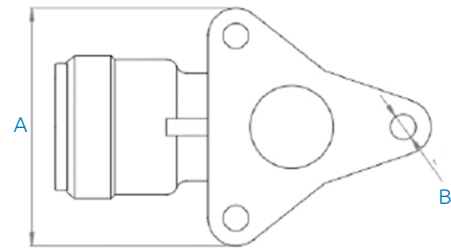
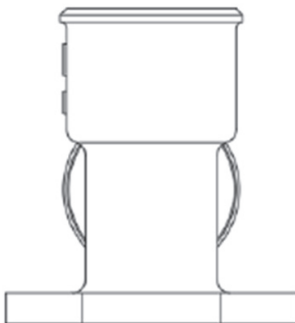


### Features & Benefits

- 50 Year warranty
- Labour savings of 40%
- Visible Connection
- Strong Stainless Grip Ring
- Permanent anti-leak system
- No tools required

### Material Specifications

NO	Description	Materials
1	Body	Brass
2	Collet	Celcone, White
3	O-Ring	EPDM, Black
4	Insert Ring	Acetal, Blue



### Product Codes and Dimensions

STOCK NO.	D1	D2 (BSPP)	A (mm)	B (mm)	C (mm)	D (mm)	E (mm)
36090	15	1/2"	43	3 – 4.6	67.5	47	28
36091	22	3/4"	56	3 – 4.6	82	55	33