



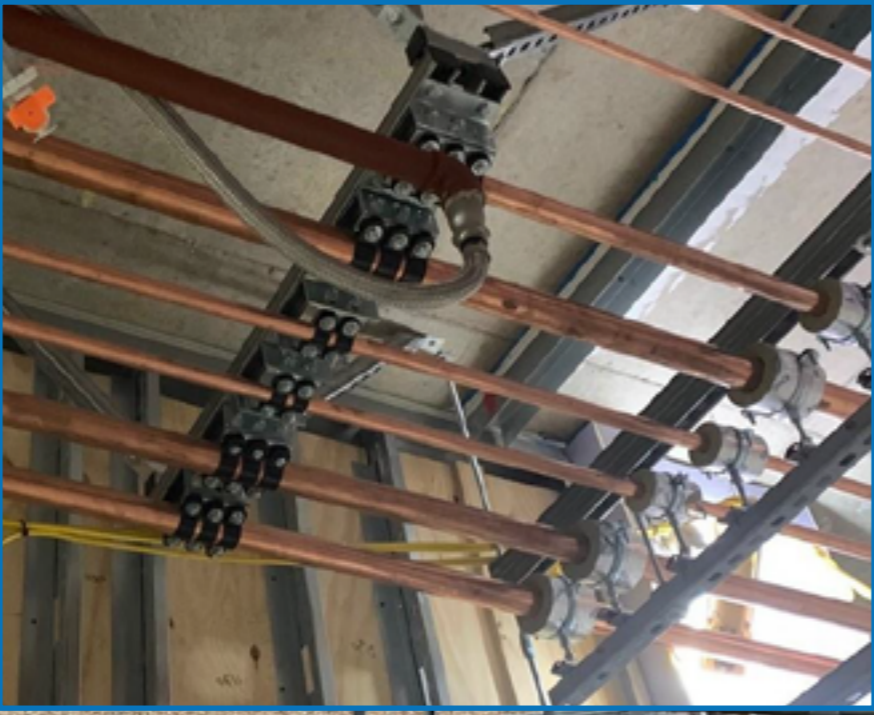
STONE WOOL PIPE SUPPORT BLOCKS



Brymec

Unit C, Redlands, Coulsdon, Surrey, CR5 2HT

Email: technical@brymec.com **Tel:** 03330 005 555 **Web:** brymec.com

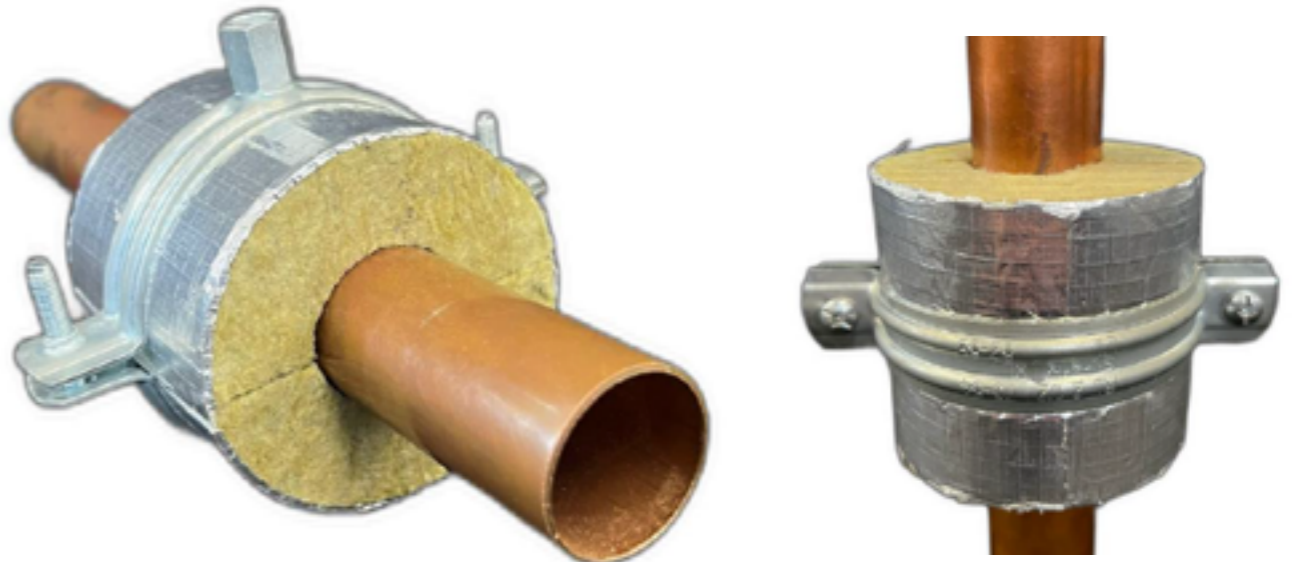


BRYMEC STONEWOOL PIPE SUPPORT BLOCKS

Brymec Stonewool Pipe Support Blocks have been designed to minimise the effects of thermal bridging from pipe suspension systems, maintaining the energy efficiency of pipework operating at temperatures of **0°C - 650°C**.

Stonewool Pipe Support Blocks are manufactured with non-combustible **200kg** stone wool and when combined with Stonewool H&V Pipe Sections, form an efficient insulation solution with thermal, fire and acoustic benefits.

STONEWOOL PIPE SUPPORT BLOCKS

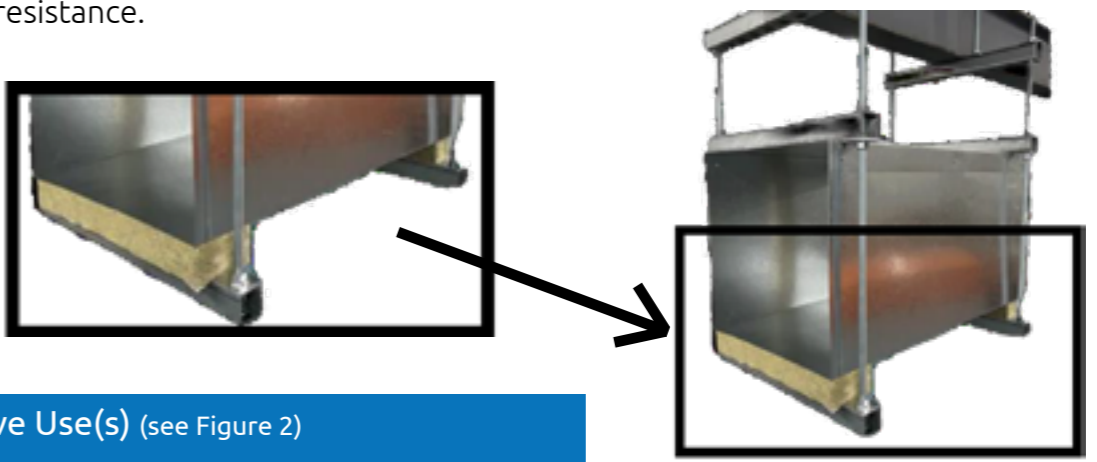


Description (See Figure 1)

The pre-formed parts known as Stonewool Pipe Support Blocks are made of 200kg stone wool. Stonewool Pipe Support Blocks are pre-cut and have a foil face. When fitting to steel pipe work, we recommend a Half/Full Galv sleeve once exceeding 76mm pipe size.

Applications

Stonewool Pipe Support Blocks can be used with cold/hot steel and copper pipes working at temperatures ranging from 0°C to 650°C. Stonewool Pipe Supports are intended for use in pipe supports, hanger brackets, and clamps, and provide excellent load bearing capabilities as well as point load resistance.



Alternative Use(s) (see Figure 2)

The source material used to make our Pipe Support Blocks can also be used for internal / External Duct Supports. The support blocks are suitable for all new construction and in the residential, commercial, light industrial HVAC / Building Services. Load Bearing Insulation inserts can be supplied 1200mm x 40mm, 50mm, 80mm & 100mm thick x 50mm or 100mm width – BCO covered on one side. When properly taped and sealed will create a continuous and sealed vapour barrier.

Product Information

Product Information	Description
Outside diameter range	15mm - 610mm
Wall thickness	20 - 100mm
Length	80 - 100mm standard (longer for specific site requirements)
Reaction to fire	Non-Combustible stone wool
Nominal density	200Kg/m ³

Pipe Support Length	OD range (mm)	Thickness range (mm)
80mm	15 - 135	20 - 80
	140 - 160	25 - 60
100mm	89 - 135	100
	140 - 160	70 - 100
	169 - 210	25 - 100

Installation

Stonewool Pipe Support Blocks are simple to install and are available to suit a wide range of pipe diameters. The blocks are supplied pre-cut. Simply place the support around the pipe and move into the location of the pipe support clip, ensuring the support is positioned centrally. Once positioned, ensure that the joints between the pipe support and pipe insulation is securely taped with a suitable self-adhesive aluminum foil tape to maintain a continuous vapour barrier. Once installed, Stonewool Pipe Sections shouldn't require any further maintenance.

Performance

PROPERTY	VALUE	ACCORDING TO
REACTION TO FIRE		
Reaction to Fire, Euroclass	A1	EN 14303:2009 (EN 13501-1)
THERMAL RESISTANCE		
Thermal Conductivity in 50 °C, λ ₅₀	0,042 W/mK	EN 14303:2009+A1:2013 (EN 12667)
Thermal Conductivity in 100 °C, λ ₁₀₀	0,046 W/mK	EN 14303:2009+A1:2013 (EN 12667)
Thermal Conductivity in 150 °C, λ ₁₅₀	0,052 W/mK	EN 14303:2009+A1:2013 (EN 12667)
Thermal Conductivity in 200 °C, λ ₂₀₀	0,060 W/mK	EN 14303:2009+A1:2013 (EN 12667)
Thermal Conductivity in 250 °C, λ ₂₅₀	0,069 W/mK	EN 14303:2009+A1:2013 (EN 12667)
Thermal Conductivity in 300 °C, λ ₃₀₀	0,081 W/mK	EN 14303:2009+A1:2013 (EN 12667)
Thermal Conductivity in 400 °C, λ ₄₀₀	0,110 W/mK	EN 14303:2009+A1:2013 (EN 12667)
Thermal Conductivity in 500 °C, λ ₅₀₀	0,147 W/mK	EN 14303:2009+A1:2013 (EN 12667)
Thermal Conductivity in 600 °C, λ ₆₀₀	0,192 W/mK	EN 14303:2009+A1:2013 (EN 12667)
Dimensions and Tolerances	T5	EN 14303:2009+A1:2013 (EN 12667)
WATER PERMEABILITY		
Water Absorption, Short Term WS, Wp	< 1 kg/m ²	EN 14303:2009+A1:2013 (EN 1609)
TRACE QUANTITIES OF WATER SOLUBLE IONS AND THE PH VALUE		
Chloride Ions, Cl ⁻	< 10 ppm	EN 14303:2009+A1:2013 (EN 13468)

