

# Gas Solenoid Valve Fast Open 230V - 1/2" to 1" SOL2



## Features and Benefits

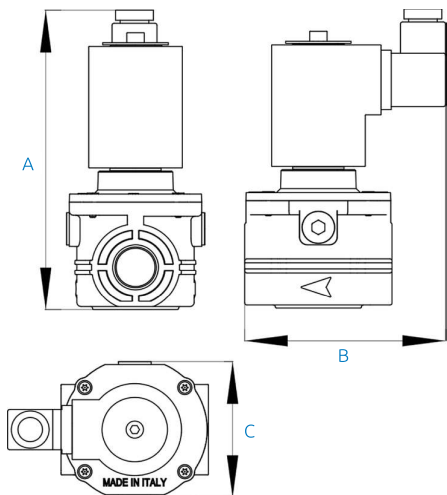
- Fast Opening/Closing <1 second
- 20 Operations per minute
- Fail Safe Closed
- Automatic Reset
- 230V (-15%+10%) 50-60Hz
- 3 Test Point connections 1/4" NPT

## Technical Data

- Field of application: Non aggressive Gas Family 123 & air
- Maximum Working Pressure: 360 mbar
- Working Temperature: -20°C to +60°C

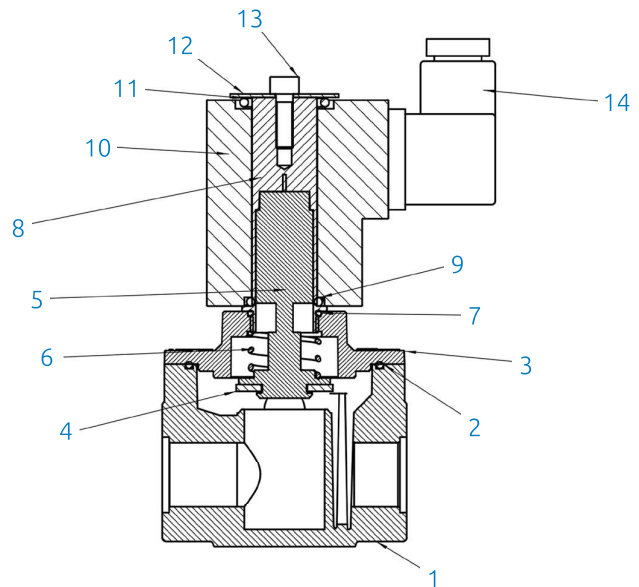
## Applicable Standards

- Thread Standard ISO 228/1
- EN161/PED/EAC
- Coils to class F copper wire class H
- Protection degree IP65
- Complies with PED 2014/68/EU



## Product Codes & Dimensions

STOCK NO	DN	A	B	C	Kg
36680	1/2"	149	72	68	0.8
36681	3/4"	149	72	68	0.8
36682	1"	149	72	68	0.8



## Material Specifications

PART NO	PART NAME	MATERIAL
1	Body	Aluminium Alloy
2	O-Ring	NBR
3	Cover	Aluminium Alloy
4	Gasket	NBR
5	Plunger	Steel - Brass
6	Spring	Stainless Steel 304
7	O-Ring	NBR
8	Pilot	Steel - Brass
9	O-Ring	NBR
10	Coil	Steel - Nylon - Copper
11	O-Ring	NBR
12	Washer	NBR
13	Screw	Steel
14	Connector	Nylon