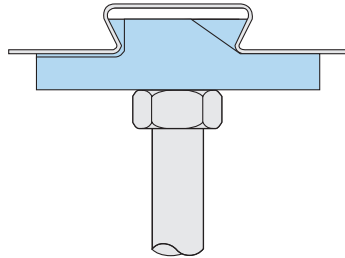
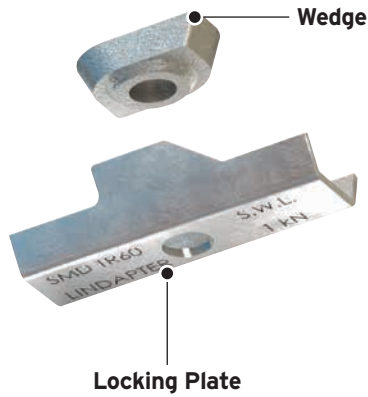
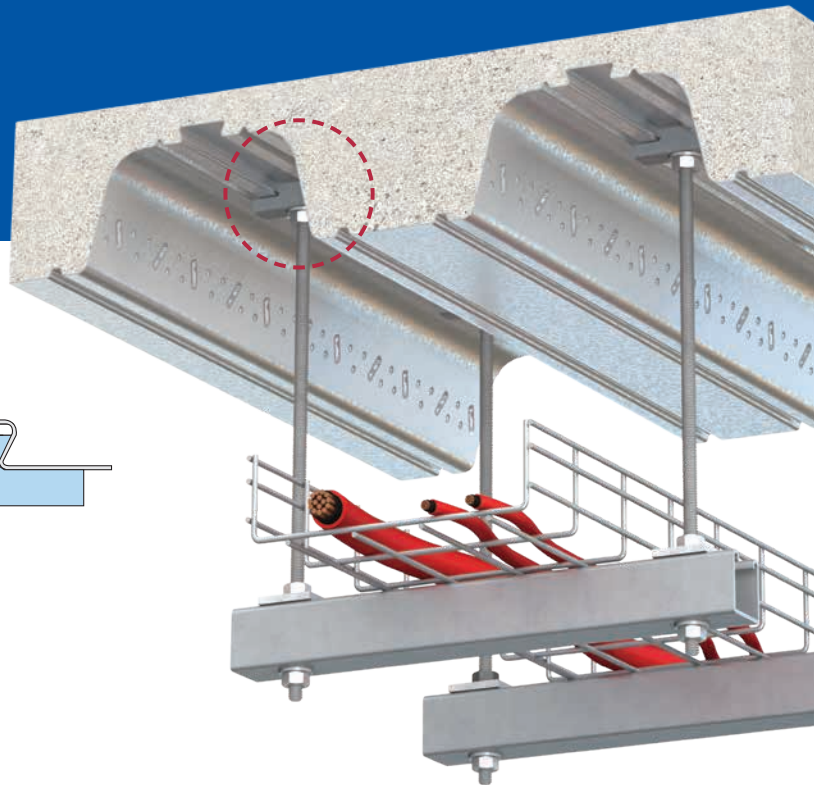


Type TR60

Designed for the TR60+™ and TR80+™ profiles manufactured by SMD®.



For Characteristic Resistances when designing a connection to Eurocode 3, refer to DoP No.020 (CE) or DoC No.120 (UKCA) on Lindapter's website. Alternatively, request a DoP or DoC brochure.

Locking Plate: Pre-galvanised strip. **Wedge:** Malleable iron, bright zinc plated.

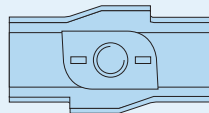
| Product Code | Rod min 4.6 | Safe Working Load (FOS 3:1) | |
|--------------|-------------|-----------------------------|-------------------------|
| | | Tensile / 1 Rod kN | Tightening Torque Nm |
| TR6006* | M6 | 1.0 | 10 |
| TR6008* | M8 | 1.0 | 10 |
| TR6010* | M10 | 1.0 | 10 |

* A washer is required for TR6006. Washers are optional for TR6008 and TR6010.

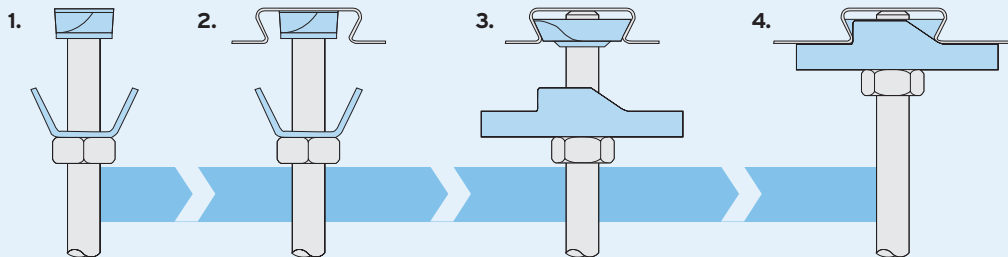
Independently fire tested in accordance with BS EN 1991-1-2. For fire ratings please refer to www.Lindapter.com



How to install...



Watch the installation video at www.Lindapter.com



- 1) Pre-assemble the locking plate and wedge (flat surface up) onto the threaded rod.
- 2) Insert the wedge into the re-entrant channel of the decking.
- 3) Rotate until the chamfered cams engage on the sides of the channel.
- 4) Slide the plate up the threaded rod and over the wedge to lock it into position in the channel. To hold the assembly in position, tighten a nut beneath the plate and washer to the tightening torque specified in the table above.

- Install the decking fixings after the concrete has been poured and has reached full strength.
- If the decking profile is deformed or distorted, do not install the fixing. If in doubt, contact the Technical Support team for advice.

Decking Fixings

High quality, cost effective connections for securing building services. Designed to fit inside the dovetail re-entrant channels of popular composite decking profiles, Lindapter's fixings provide a zero-impact method that avoids delamination and damage to the decking.

Lindapter Decking Fixings & Compatible Composite Decking Profile(s)

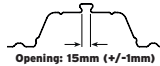
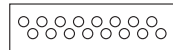
Type COM
page 67

Fire Rated



Tata Steel

ComFlor® 60, 80 and 95



Opening: 15mm (+/-1mm)



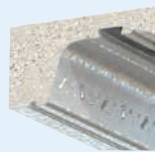
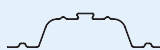
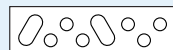
Type TR60
page 68

Fire Rated



SMD®

TR60+™ and TR80+™



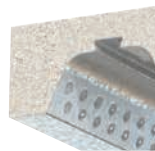
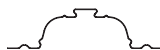
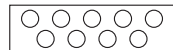
Type MF
page 69

Fire Rated



CMF®

MetFloor® 60 and MetFloor® 80



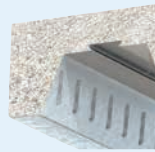
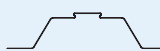
**Type MW2
Multiwedge 2**
page 70

Fire Rated



Kingspan®

Multideck MD60 and MD80



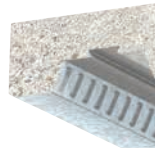
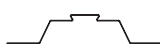
**Type AW
Alphawedge**
page 71

Fire Rated



Richard Lees Decking

Ribdeck E60

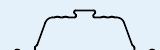


Type AMD
page 72



AMDECK®

AMDECK® 60 and AMDECK® 80



**Type SD2
Slimdek 2**
page 73



Tata Steel

ComFlor® 225



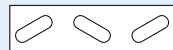
Type SM
page 74

Fire Rated



Sigmat

SigDeck 100



Type VN
page 75

Fire Rated



Fits several profiles including:

AMDECK® 54, R51+™, ComFlor® 51+, Holorib, Superib, Multideck MD50 and MetFloor® 55.



On-site capacity checks

Lindapter's Engineers can provide tensile tests on the full range of decking fixings. Available on request and subject to application.

