

SI 1805

CENTRIFUGAL PUMP



Reduced dimensions

The SI 1805 pump is designed to be easily installed whatever the layout of the premises.
Capable of evacuating up to 500 l/h, the SI 1805 pump is suitable for air conditioning units and industrial refrigeration displays.
Strong, the SI 1805 tolerates charged, high temperature and acidic condensates (pH>3.4) produced by gas condensing boilers.

BENEFITS

- **High performance**

- Can discharge condensates **up to 5.4 m**
- **Up to 500 l/h**, for shorter running time
- **Low sound level** – quiet operation

- **Versatile**

Easily removable tank and reversible pump, to allow mounting rather on the left or on the right of the application and choosing the side of the water exit.

- **Easy hydraulic connection**

- New quarter turn easily removable check valve, designed to facilitate \varnothing int. 10 mm (3/8") hose plug in.
- 2 inlet holes \varnothing 24 and 21 mm

- **High resistance**

- **Oil and acid resistant** float
- Mechanical structure **resistant to shocks**

KIT CONTENTS

- One-piece centrifugal pump with tank (0.5L)
- Integrated barb end check valve \varnothing ext. 10 mm (3/8")
- Power cord (1m, **Bare ends – L, N, G**)
- Safety switch cord (1m, bare ends)
- \varnothing 10 mm to 6 mm (3/8" to 1/4") adaptor for clear tubing
- 2 screws + 2 plugs

APPLICATIONS

- Column air conditioning units • Multi cassettes • Ducted units
- Gas condensing boilers • High efficiency gas furnace
- Refrigerated display cabinets • Evaporators



TECHNICAL SPECIFICATION

Max. flow rate	500 l/h
Max. discharge head	5.4 m
Max pressure	5.8 m (flowrate =0)
Sound level in application at 1m(3.3ft): ≤ 47 dBA (Measured in Sauermann acoustic lab, pump operating with water)	
Mains supply	230V~ 50/60Hz - 90 W
Detection levels	ON : 32mm, OFF : 25mm Safety : 39mm
Safety switch	NC 4 A résistif – 250V
Max. condensate temperature	65°C, 80°C in short peak
Max. condensate acidity	pH > 3.4 (Gas condensing boilers)
Thermal protection (overheating)	120°C (auto-reset)
Operating condition	30%: 3s ON – 7s OFF
Protection	IP20
Safety standards	CE & EAC & UKCA
RoHS directive	Compliant
WEEE directive	Compliant
Pump dimensions	L195 x l 130 x H 132 mm
Tank dimensions	L 195 x l 130 x H 43 mm
Weight (including box)	2.0 kg
Packaging	10 pcs
Box dimensions	L235 x l 135 x H 185 mm

ACTUAL FLOW RATES (l/h)

Vertical Discharge head	Total tube length (Ø int. 10 mm, 3/8")			
	5 m	10 m	20 m	30 m
1 m	460	380	280	200
2 m	390	320	240	180
3 m	300	250	190	150
4 m	200	180	130	100
5 m	90	80	60	50

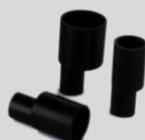
RECOMMENDED ACCESSORIES



Hose Ø int. 10mm (3/8")
ACC00911: 25 m
ACC00915: Braided, 25 m



Check valve
For replacement
Ø ext. 10 mm (3/8")
ACC00925



Inlet adaptators
Ø int. 24/25 mm: ACC00936
Ø int. 32 mm: ACC00937
Ø int. 40 mm: ACC00938



Float detector
Used to operate an additional alarm or switch on the pump.
ACC00601

Non-contractual document. We reserve the right to modify the characteristics on our products without prior notice.