

# Copper Press Male Iron Adaptor (M-Profile)

## MCP 45



### Technical Data

- Working Pressure 16 Bar @ 95°C
- "M" profile press jaws or slings
- Approved tools include Novapress, REMS, Rothenberger and Ridgid
- Male thread BSPT

### Applicable Standards

- WRAS approved
- For use with type TX copper tubing conformant to EN 1057
- Manufactured to EN1254 standard

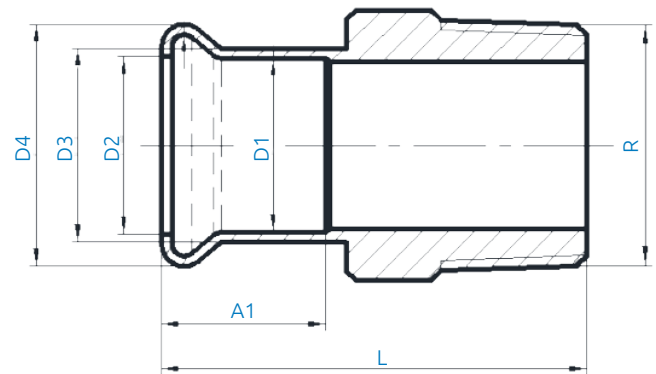


### Features & Benefits

- Durable and secure leak proof joint
- Braze free, permanent joint - no hot works required
- Huge time and resource savings
- 25 Year warranty
- Blue plastic film which will fall off when crimped for easy identification of pressed joint
- 2 point press
- Dust Covers

### Material Specifications

NO	Description	Materials
1	Body	Cu-DHP (CW024A)
2	Crimp indicator film	PVC, Blue
3	O-Ring	EPDM
4	Dust Cap	PE



### Product Codes and Dimensions

STOCK NO.	D1	D2	D3	D4	A1	L	R
28115	15	15.6	18	23	19	37	3/8"
28116	15	15.6	18	23	19	39	1/2"
28117	15	15.6	18	23	19	40	3/4"
28118	22	22.8	25	31.3	20	41	1/2"
28119	22	22.8	25	31.3	20	41	3/4"
28120	22	22.8	25	31.3	20	46	1"
28121	28	28.8	31	37.4	22	46	3/4"
28122	28	28.8	31	37.4	22	46	1"
28125	35	35.7	38.3	44.7	25	53	1 1/4"
28128	42	42.8	45.3	53.5	29	58	1 1/2"
28130	54	54.8	57.3	65.3	34	65	2"
28131	67	69.1	71.7	82.6	48	103	2 1/2"
28133	76	78.6	81.1	94.4	49	101	3"