

Copper-Press Extended Spigot Manifold Tee (M-Profile)



Technical Data

- Working Pressure 16 Bar @ 95°C
- "M" Profile Press Jaws or slings
- Approved tools include Novapress, REMS, Rothenberger and Ridgid

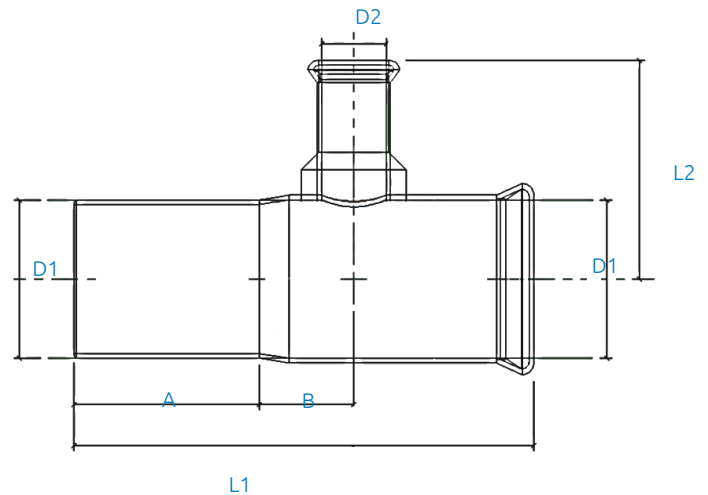
Applicable Standards

- For use with type TX Copper tubing conformant to EN 1057
- Manufactured to EN1254 Standard



Features & Benefits

- Quickly and easily fabricate water distribution manifolds
- Reduce the number of joints normally required with conventional methods
- Accurately space pipes to allow for water meter assembly / valves / metering points etc
- Durable and secure leak proof joint
- Braze free, permanent joint - No hot works required
- Huge time and resource savings
- 25 year warranty
- Blue plastic crimp indicator which falls off when crimped for easy identification of pressed joint
- 2 point press
- Dust covers



UK Patent Pending

Material Specifications

Description	Materials
Body	Cu-DHP (CW024A)
Crimp indicator film	PVC, Blue
O-Ring	EPDM
Dust Cap	PE

Product Codes and Dimensions

STOCK NO.	D1 (mm)	D2 (mm)	A (mm)	B (mm)	L1 (mm)	L2 (mm)
27897	54	22	63	32	157	75
27898	54	28	63	38	163	62.5