



**Hot and Cold Manifold Systems**

**Manifolds • Pipe Systems • Accessories**

# Hot and Cold Manifold Systems

## Company Overview

### The Group

Our parent company Emmeti S.p.A. was founded in 1976, initially marketing components for heating systems before making a shift in 1984 to focus on automated assembly and distribution. Since then Emmeti have expanded rapidly and now operate in more than 65 countries worldwide with sales and marketing offices in Italy, Spain, France, Brazil and North America as well as the UK.

Emmeti has a wide range of products targeted at the heating, plumbing, renewable and air conditioning markets and is committed to developing products which reduce and monitor energy consumption. In recent years they have developed significant renewable energy products, and continue to innovate in this emerging field. They also operate to the highest possible standards and satisfy the requirements of ISO 9001:2000 for their Quality Management System and ISO 14001:2004 for their Environmental Management System. Emmeti have two large manufacturing and assembly plants in Italy and in 2009 developed and built a third factory, the Multi-layer pipe facility. This factory covers 10,000m<sup>2</sup> with a dedicated laboratory and 2 working lines which have the capacity to produce up to 30,000,000 metres of pipe per year.

In 2015 the industrial Group RETTIG ICC acquired a controlling share in the Emmeti Group. RETTIG ICC - Indoor Climate Control is part of the Finnish group RETTIG Ltd, and is the European leader in the production and distribution of radiators in steel, with a growing presence in the markets of radiant systems, valves and controls for HVAC systems. The acquisition of Emmeti Group provides an excellent synergy between the two organisations and will support the strategic plans for growth and innovation of RETTIG ICC, allowing entry into new geographic markets and the transfer of new technologies.

### Emmeti UK

We established Emmeti UK in Burford, Oxfordshire in 2004, to support Emmeti Group from a UK base. Distributing Emmeti and OEM products through wholesalers, merchants, system houses and renewable companies nationwide who serve the needs of the rapidly growing underfloor heating market as well as the heating and plumbing sector. We have achieved a reputation for excellence in fast order turnaround together with sales and technical support for our customers.

From our central warehouse located near Oxford we are able to offer ex-stock next day. This is supported by weekly shipments from our manufacturing base in Italy.

We are able to offer innovative new products to the UK market, with the substantial resources and back-up of the Emmeti Group as well as tailoring products to a customer's own specification. We have recently gained BBA approval for our manifold and pipe and many of our products are WRAS approved for use with potable water systems.

### Products

We have developed a product portfolio specially designed to cater for the UK plumbing and heating markets, in particular the underfloor heating, wall hung radiator heating and hot and cold water sectors. Core products for the markets we serve are:

- Manifolds and fittings for hot and cold water distribution
- Emmeti Gerpex Multi-layer composite pipe and press fittings
- Manifolds and fittings for radiator and underfloor heating systems
- Pipe, insulation and accessories for underfloor heating
- Zone controls for radiator and underfloor heating, including thermostats, actuators and wiring centres
- Expansion vessels for both heating and potable water applications
- Manual and thermostatic radiator valves
- Manual and motorised ball valves
- Pressure reducing valves

### Product Standards & Customer Support

All of our products are manufactured to comply with European standards wherever possible. Additionally, where appropriate, our products also satisfy the requirements of WRAS for use in potable water systems. More recently, we have gained BBA approval for our manifold systems as can be seen in our technical product guides available on-line. In addition, we have provided individual installation guides with each product and copies can be obtained by going on-line or by contacting our sales office.

We have designed this brochure to showcase the range of hot and cold manifold systems available to our customers and included technical information designed to make the job of decision making as simple as possible.

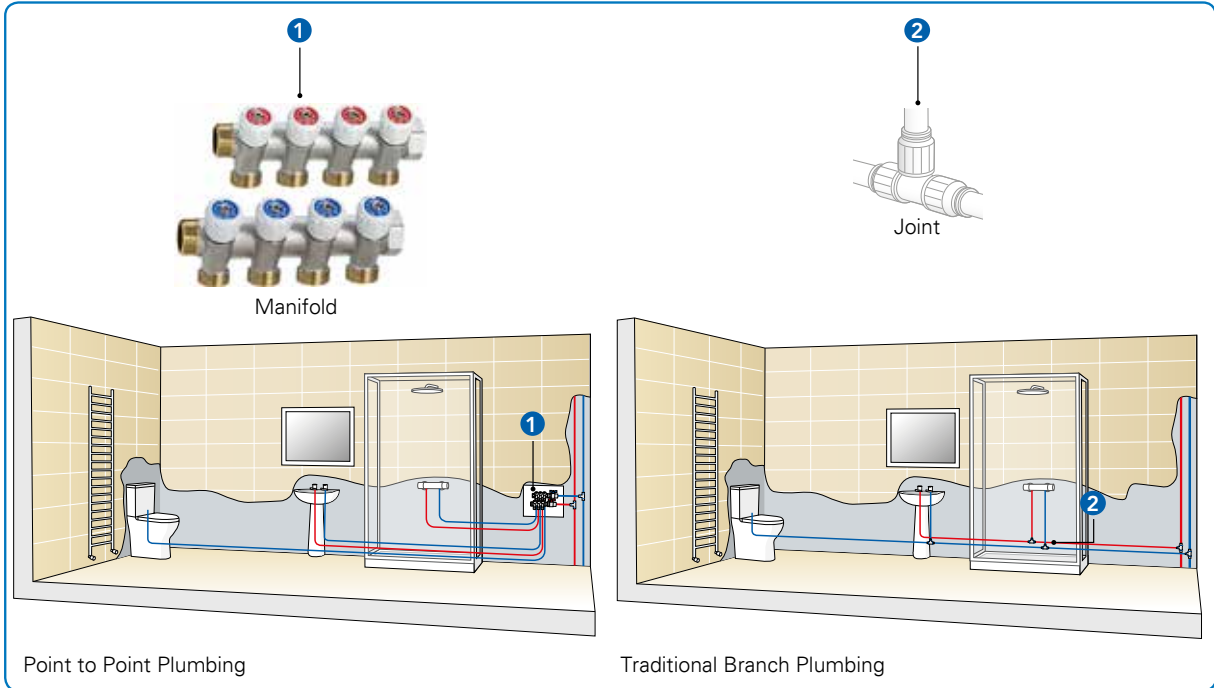
If you would like to receive regular product updates, news and technical articles, please register via our website or, if you are viewing this page electronically, simply click on the link <http://www.emmeti.co.uk/news-update>

Our Emmeti UK website offers on-line access to literature, product data, technical information, articles, and the latest product launches: [www.emmeti.co.uk](http://www.emmeti.co.uk)



## An Overview of Hot and Cold Manifold Systems

By using an Emmeti manifold system in a point to point plumbing configuration you can greatly reduce the number of joints in your system, speeding up installation time and vastly reducing the chances of a leak. A manifold system also allows you to reduce certain pipe sizes per outlet, which will save on material and installation cost (e.g. WC feed with 10mm and shower feed with 16mm).



### What is Point to Point Plumbing?

Point to point plumbing is a method of installation using a manifold to distribute hot and cold water to items of sanitary ware and appliances around the property (such as washing machines, sinks, baths, dishwashers, and so on). Each individual outlet is supplied using a continuous length of pipe from the manifold, with joints at the outlet and at the manifold only. This reduction of joints in the system reduces installation time and vastly decreases the potential for leaks, which can lead to costly repair claims and damage to reputation.

The examples above show how the use of a manifold eliminates all concealed intermediate joints (that could potentially leak) against the conventional method of installation. The pipe distributed to each outlet can be tailored to suit individual requirements i.e. 16mm to shower and 10mm to basin and WC. The manifold shown also allows for isolation at each outlet in the event of any repair work or maintenance.

	Number of fittings (Tees & Elbows)	Number of joints
Point to point example	0	14
Branch example	7	25

A joint in a water system is the most likely place for a leak to occur. We offer the ability to greatly reduce this potential risk by reducing the number of joints in the system.

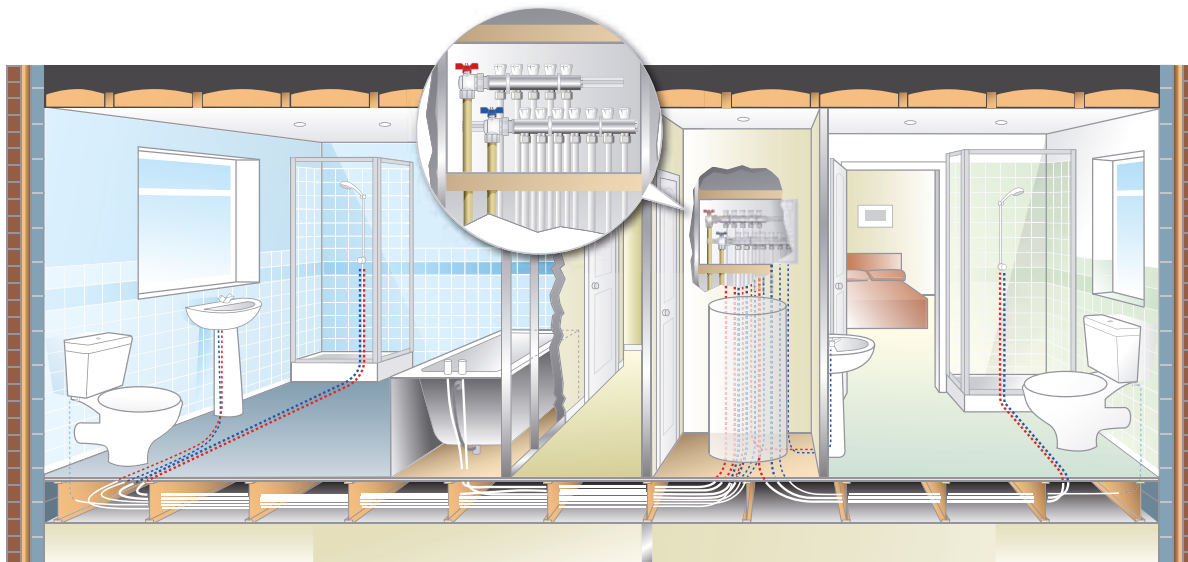
The table above shows the principles of point to point plumbing. There is a huge difference in the number of joints between traditional branch and point to point systems (up to 70%), saving installation time and vastly reducing the potential for a leak. The reduction in fittings along with the speed of installation can offset any additional costs incurred when purchasing the manifold and additional pipe.

## Hot and Cold Manifold Systems

### How a Hot and Cold Manifold System Works Within a Building

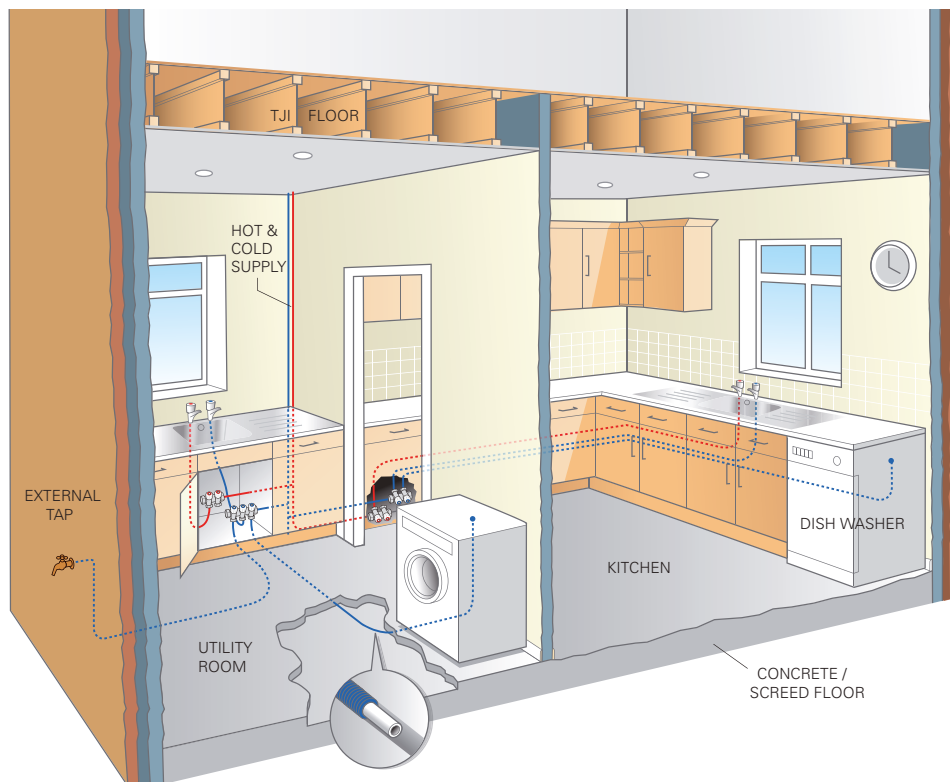
#### Domestic Applications

Topsan manifold system supplying main bathroom and en-suite.



A pair of Topsan manifolds located in the airing cupboard to distribute hot and cold water to each individual outlet such as showers, sinks and WC. Each individual outlet is supplied using a continuous length of pipe (point to point) from the manifold which means that the only joints created are at each point. The elimination of fittings greatly reduces installation time and potential for future leaks. The addition of isolation for each outlet enables future maintenance and repair work to be carried out easily.

#### Multiplex manifold system supplying utility and kitchen outlets



Using two pairs of Multiplex manifolds, generally located under the sink or in a termobox, hot and cold water is distributed to outlets and appliances in a continuous length of pipe to eliminate any concealed joints behind kitchen units and in floor construction.

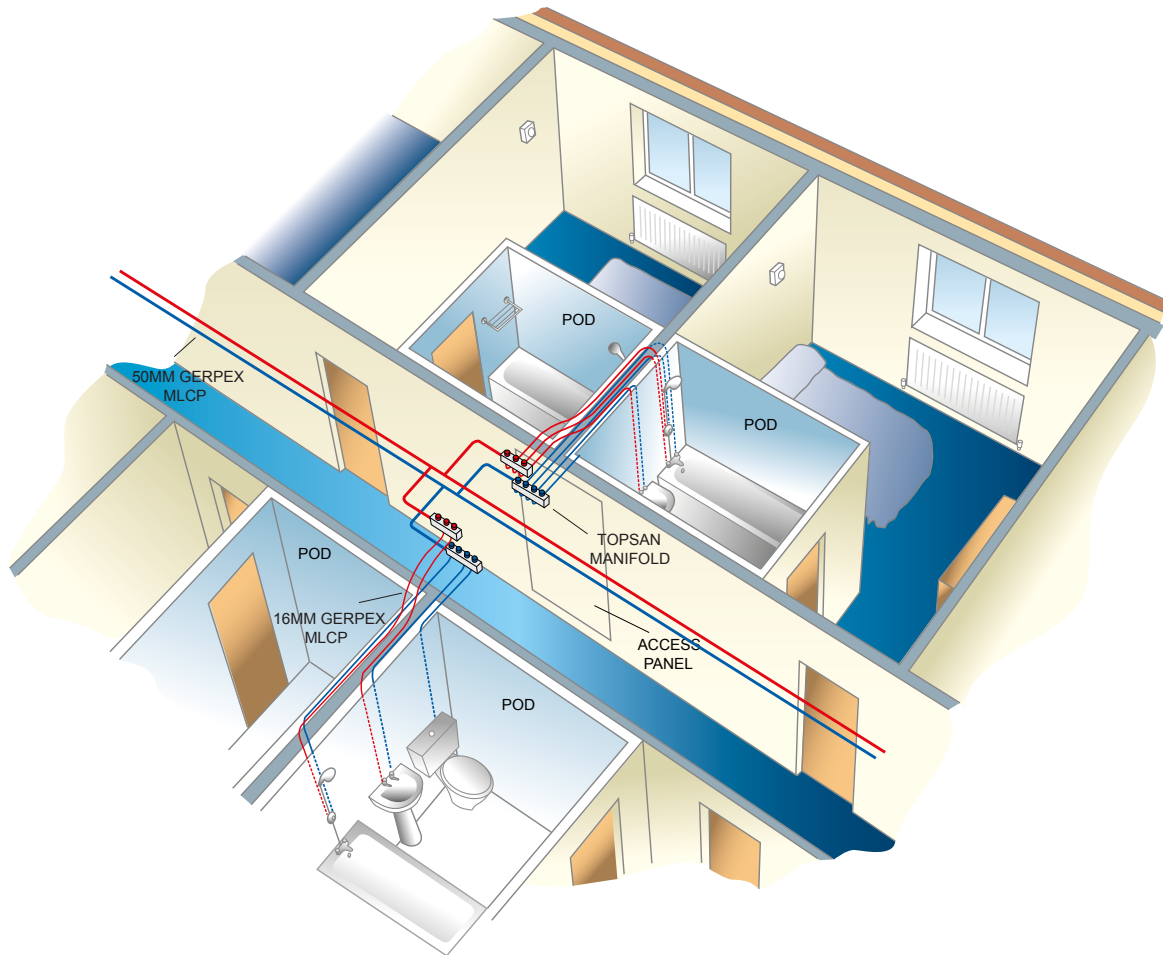
Please see pipes routed behind units and within flexible conduit in screed.

For further details such as **product codes** and **prices** please refer to our **Emmeti Product Price List** or visit our website [www.emmeti.co.uk](http://www.emmeti.co.uk), or alternatively please call us on 01993 824900

## How a Hot and Cold Manifold System Works Within a Building

### Commercial Applications

Hot and cold manifold system supplying hotel bathroom outlets



Bathroom outlets supplied from main hot and cold service pipework via manifolds located within service hatches in main corridor. This will allow isolation of individual rooms to facilitate maintenance and repair work in case of emergency while ensuring business continuity. The point to point method ensures that there are no concealed joints which could potentially leak, causing disruption to hotel guests and expense to hotel owners.

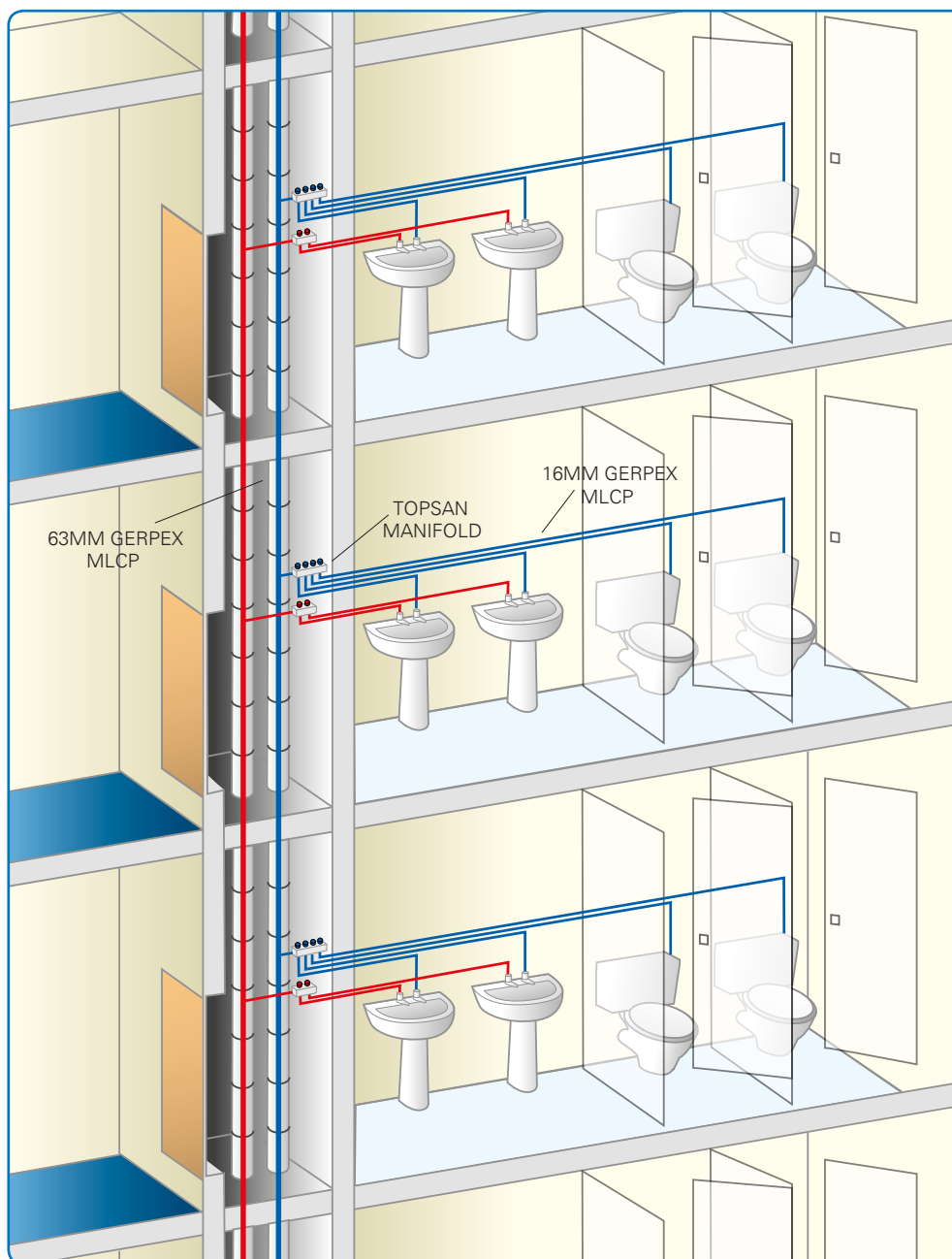
This type of installation is ideally suited to POD construction such as pre-fabricated army barracks and student accommodation.

## Hot and Cold Manifold Systems

### How a Hot and Cold Manifold System Works Within a Building

#### Commercial Applications

Rising mains in a multi-story building with hot and cold manifold systems feeding off to washrooms.



Using TopSan manifold systems on each level in a multi-story building enables the isolation of individual outlets, rooms, or entire floors, for repair and maintenance. The ability to safely isolate parts of the building whilst keeping the majority of it operational ensures business continuity for the owners.

The main hot and cold water pipework and the manifolds are easily accessible within riser cupboards and there are no concealed joints which could potentially leak, minimising the risk of disruption to occupiers.







This type of installation is ideally suited to offices, shopping centres, higher education and high rise multi-occupancy projects such as student accommodation.

This drawing shows 63mm Gerpex MultiLayer Composite Pipe installed as the main hot and cold risers with 16mm Gerpex feeding from the Topsan Manifold to each outlet.

For further details such as **product codes** and **prices** please refer to our **Emmeti Product Price List** or visit our website [www.emmeti.co.uk](http://www.emmeti.co.uk), or alternatively please call us on 01993 824900

## Key Benefits

### For the Installer





-  Provides you with individual isolation of outlets and appliances if required. You are able to isolate parts of the system whilst the rest remains operational, reducing disruption for installation and maintenance.\*
-  Reduced installation time of between 30%-40% due to fewer fittings required.
-  Gives you a reduction of up to 70% of joints, with virtual elimination of tees and elbows, therefore the chance of leaks both during and post installation is greatly reduced.
-  Ensures that you have good accessibility in the event of a problem - limits the points at which a leak could occur to the point of use and the manifold, significantly reducing the time for fault finding.
  - All joints are above ground and are easily accessible.
-  Monoblocco connectors allow you to tailor the outlet sizes for different pipe sizes going to different outlets. You can therefore optimise the pipe size to be installed per outlet.
- Allows you to adjust the flow rates to individual outlets.
-  Allows an easier understanding of water system schematics in relation to points of isolation. This will ensure future maintenance and repair can be carried out with minimum disruption.

\*Only applies to Topsan and Multiplex Manifolds

### For the Main Contractor / Developer





-  Gives you peace of mind. Having fewer and easier to access joints reduces the risk of delays and call backs.
-  Allows you to improve planning, organisation and standardisation on site, benefitting the build program for your project.
- Provides you with first fix isolation benefitting your build program.
-  Our Hot & Cold Plumbing manifolds are WRAS approved for use in potable water systems, they also hold BBA approval which is a production management systems approval. These approvals ensure that product integrity is tested and also that our manufacturing quality plan is adhered to with independent, twice yearly production process inspections.
-  Benefits health and safety on your project, cuts down the amount of hot works on site.

### For the Building Occupier / Owner

-  Gives you the flexibility of central and individual control – when maintenance is required, rather than isolating a whole system (such as the mains supply tap under the kitchen sink) the service engineer can isolate individual circuits. This minimises drain-down time, and reduces system recovery issues on re-commissioning.\*
- Each circuit can be marked with an icon, and whether it is hot or cold, allowing easy identification of which isolating tap to close. The manifolds are supplied with individual identification stickers to apply during installation.\*
-  In the unlikely event of a leak, you have the significant advantage of being able to isolate only the circuit that has the leak, whilst continuing to use the other outlets, until remedial work can be arranged.\*
-  Provides you with considerably reduced maintenance costs through less disruption, down-time and maintenance engineer cost and time on site.
-  Your manifolds can be installed in a convenient location such as a riser or service cupboard for easy access meaning less disruption to the building occupiers and ease of repair/maintenance for engineers and contractors.
- Having good accessibility will mean that your ongoing water risk assessments will be easier to conduct.

\*Only applies to Topsan and Multiplex Manifolds

### For the Specifier

-  By specifying this system it allows you to add value to the project with an improved method of installation. This will optimise time on site whilst selling confidence to the client with ease of maintenance and reduced chance of leaks.
-  Innovative concept that will distinguish your project from other designers.
-  Manifolds give you a precise, neat design and layout allowing a convenient central location for distribution, service and maintenance. Manifolds installed in riser or service cupboards mean lack of disruption to the building occupiers and ease of repair/maintenance for engineers.
-  Can offer cost savings due to shorter lengths of primary hot and cold pipework between the source and manifold.

## Hot and Cold Manifold Systems

### The Emmeti Hot and Cold Manifold Range

We offer four types of manifold for use in hot and cold domestic plumbing systems. The choice of manifold will depend on the features required for your project:



#### TopSan

Supplying the greatest number of outlets as a single piece unit with up to 12 ways each with isolation and identification labels.

See Page 10.



#### Multiplex

Offering 2- 4 ways with individual isolating taps presented at a 45° angle.

See Page 11.



#### Topway SN

Distribution only manifold with 2- 12 ways.

See Page 12.



#### Modular

Distribution only manifold with 2- 4 ways.

See Page 13.

### Product Comparison

	Topsan	Multiplex	Topway SN	Modular
Applications	Hot and Cold & Radiator	Hot and Cold & Radiator	Hot and Cold & Radiator	Hot and Cold & Radiator
Inlet Connection	¾" & 1" options	¾" & 1" options	¾", 1" & 1 ¼" options	¾" & 1" options
Outlets Connection	10 – 20mm*	10 – 20mm*	10 – 20mm*	10 – 20mm*
Ways	2 to 12 in ¾" 4, 5 and 6 in 1"	2 to 4	2 to 12	2 to 4
Extension	Yes, with coupling	Yes, with coupling	Yes, with coupling	Yes, screw together
Individual Isolating taps	Each outlet	Each outlet	No, distribution only	No, distribution only
Identification of individual outlets	Red / Blue coding Labels supplied	Red / Blue coding Labels supplied	No	No
Max Pressure	10 Bar	10 Bar	10 Bar	10 Bar
WRAS Approval	No. 1507073	No. 1507073	No. 1507073	No. 1507073

\* Monoblocco connectors are available to suit pipe sizes 10 - 20mm and pipe types (PB, PE-Xa, PE-RT, MLCP, & copper)

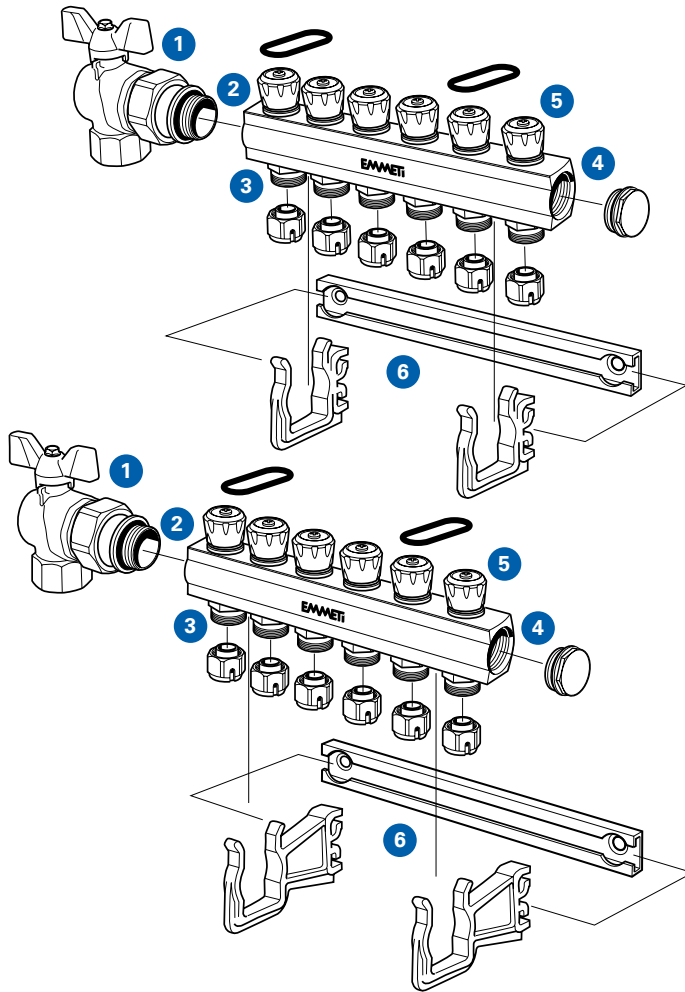


For further details such as **product codes** and **prices** please refer to our **Emmeti Product Price List** or visit our website [www.emmeti.co.uk](http://www.emmeti.co.uk), or alternatively please call us on 01993 824900



## The Emmeti Manifold Range

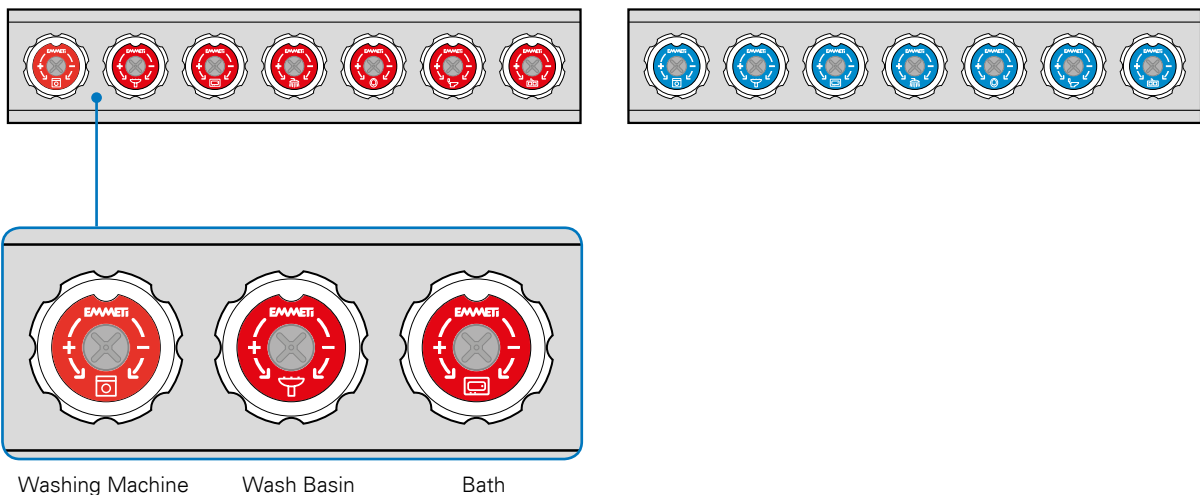
### Key Features of a Typical TopSan Manifold



The full range of TopSan manifolds are available with between 2 and 12 ways (in ¾" and 4,5 and 6 ways in 1).

- Ball Valve** - for complete system isolation
- Inlet connections** – Pipe coming into the manifold distributing in either hot or cold water. ¾", 1", and 1 ¼" connections are available depending on the manifold used.
- Outlet connections** – Standard 24 x 19 thread designed to take Emmeti Monoblocco connectors to suit pipe sizes 10mm – 20mm, and a range of pipe types such as PB, PE-Xa, PE-RT, MLCP & copper
- Extension** – If additional ways are required, manifolds can be joined together with a coupling. A blanking plug is used at the end of the manifold.
- Individual isolating taps** – Allows for isolation and adjustment of flow rates for each outlet. Each outlet (e.g. sink, bath, etc) is identified by applying a small blue or red label with an icon designating the point of use (labels supplied with product)\*
- Mounting** – The manifolds can be surface mounted on brackets, concealed in a purpose designed plastic cabinet or within a partition wall. (Manifolds should always be mounted rather than being supported by the pipes to reduce the risk of leaks caused by movement from temperature changes in the pipes).

\*Only applies to Topsan and Multiplex Manifolds



Washing Machine

Wash Basin

Bath

## Hot and Cold Manifold Systems

### The Emmeti Manifold Range - Topsan

#### Topsan manifold range

A range of WRAS approved nickel plated, extruded brass manifolds with ¾" and 1" inlet connection. Wheelhead isolation valves are fitted to each outlet with red and blue labels supplied for easy identification of each outlet.

TopSan is supplied in single rails for flexibility when mounting using our slider rail system. This enables the rails to be mounted either offset above one another or side by side. TopSan can also be mounted in the 'Termobox' plastic manifold cabinet which has the slider rail system moulded in and needs only the slider rail brackets.

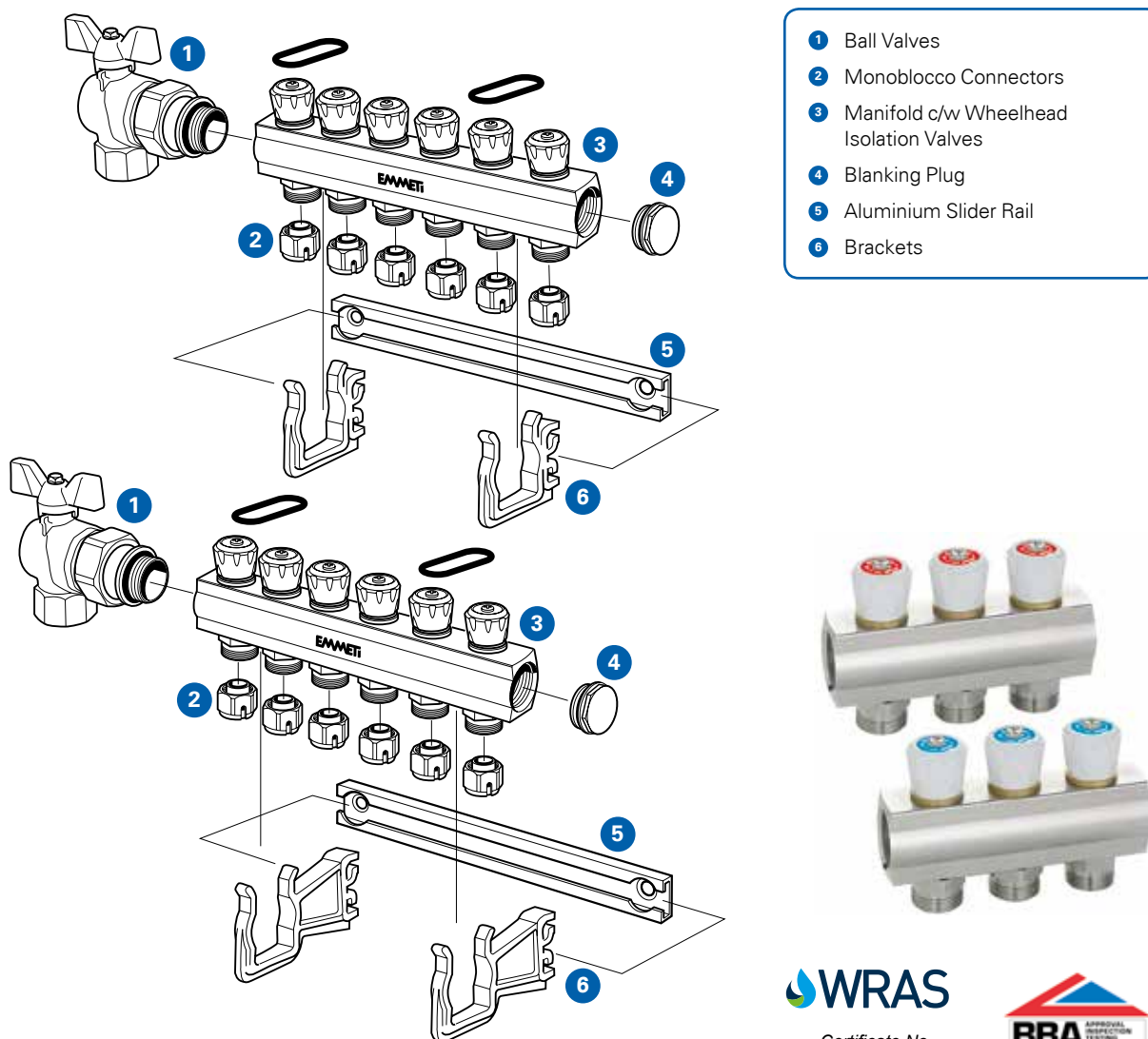
Also available are ball valves, mounting brackets, fittings and WRAS approved Monoblocco pipe connectors for a wide range of pipe types and sizes.

Inlet connection	¾" and 1"
Outlet connections	24 x 19"
Outlet centres	36mm
Ways	2 to 12 ways in ¾" and 4, 5 and 6 ways in 1"
Extension	Yes, with coupling**
Individual isolating tap	Yes, each outlet
Identification of individual appliances	Red / Blue coding labels supplied
Maximum operating pressure	10 bar
Maximum operating temperature	110°C

\* Monoblocco connectors are available to suit pipe sizes 10 - 20mm and pipe types (PB, PE-Xa, PE-RT, MLCPE, & copper)

\*\* Consider pressure drop and flow rate if going above 12 ways

#### Topsan manifold assembly: exploded image of fully assembled kit



- 1 Ball Valves
- 2 Monoblocco Connectors
- 3 Manifold c/w Wheelhead Isolation Valves
- 4 Blanking Plug
- 5 Aluminium Slider Rail
- 6 Brackets



Certificate No.  
1507073



For further details such as **product codes** and **prices** please refer to our **Emmeti Product Price List** or visit our website [www.emmeti.co.uk](http://www.emmeti.co.uk), or alternatively please call us on 01993 824900

## The Emmeti Manifold Range - Multiplex

### Multiplex manifold 2-4 ways with individual isolating taps

A range of WRAS approved nickel plated, stamped brass manifolds in ¾" and 1" inlet sizes. Available in 2, 3 and 4 ways per manifold with an extension coupling for greater than 4 way applications. Wheelhead isolation valves at a 45° angle for ease of use with red and blue labels supplied for easy identification of each circuit.

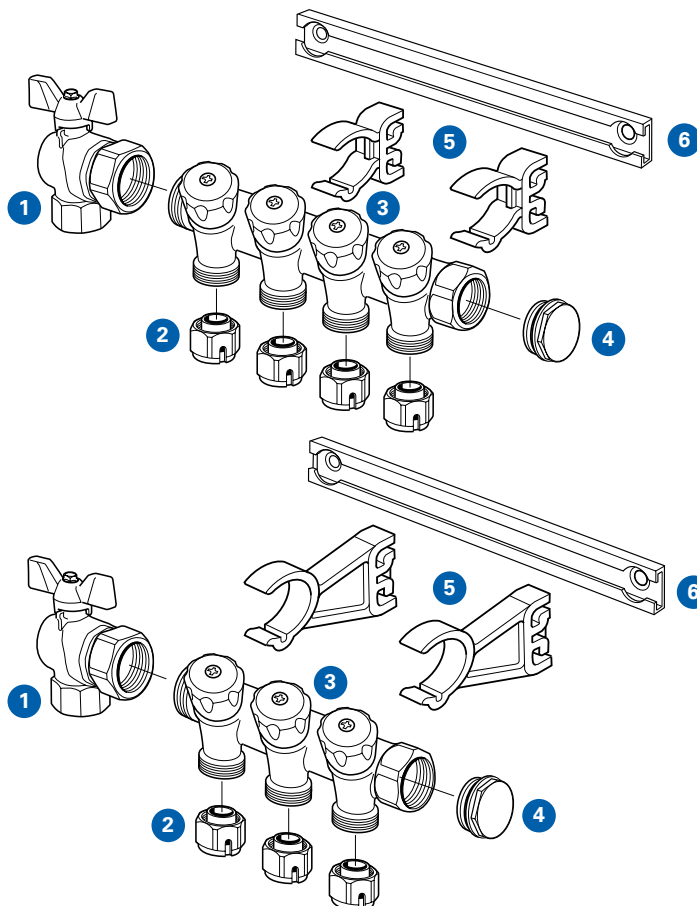
Multiplex manifolds can be mounted using our slider rail system, or the 'Termobox' plastic manifold cabinet.

Also available are a range of accessories including ball valves, mounting brackets, fittings and WRAS approved Monoblocco pipe connectors for a wide range of pipe types and sizes.

Inlet connection	¾" & 1"
Outlet connections	24 x 19"
Outlet centres	36mm
Ways	2 to 4
Extension	Yes, with coupling
Individual isolating tap	Yes, each outlet
Identification of individual appliances	Red / Blue coding labels supplied
Maximum operating pressure	10 bar
Maximum operating temperature	110°C

\* Monoblocco connectors are available to suit pipe sizes 10 - 20mm and pipe types (PB, PE-Xa, PE-RT, MLCP, & copper)

### Multiplex manifold assembly: exploded image of fully assembled kit



- 1 Ball Valves
- 2 Monoblocco Connectors
- 3 Manifold c/w Wheelhead Isolation Valves
- 4 Blanking Plug
- 5 Plastic Brackets
- 6 Aluminium Slider Rails



Certificate No.  
1507073



## Hot and Cold Manifold Systems

### The Emmeti Manifold Range - Topway SN

#### Topway SN distribution manifold with 2-12 ways

A range of WRAS approved nickel plated, extruded brass manifold in ¾", 1" and 1¼" inlet sizes, suitable for heating and hot water applications where isolation at the manifold is not required. Topway SN allows up to 12-way as a single piece without interconnecting 2 or 3, 4-way manifolds.

There are a number of different ways to mount the manifolds such as our slider rail system, metal brackets or placed within a 'Termobox' plastic manifold cabinet.

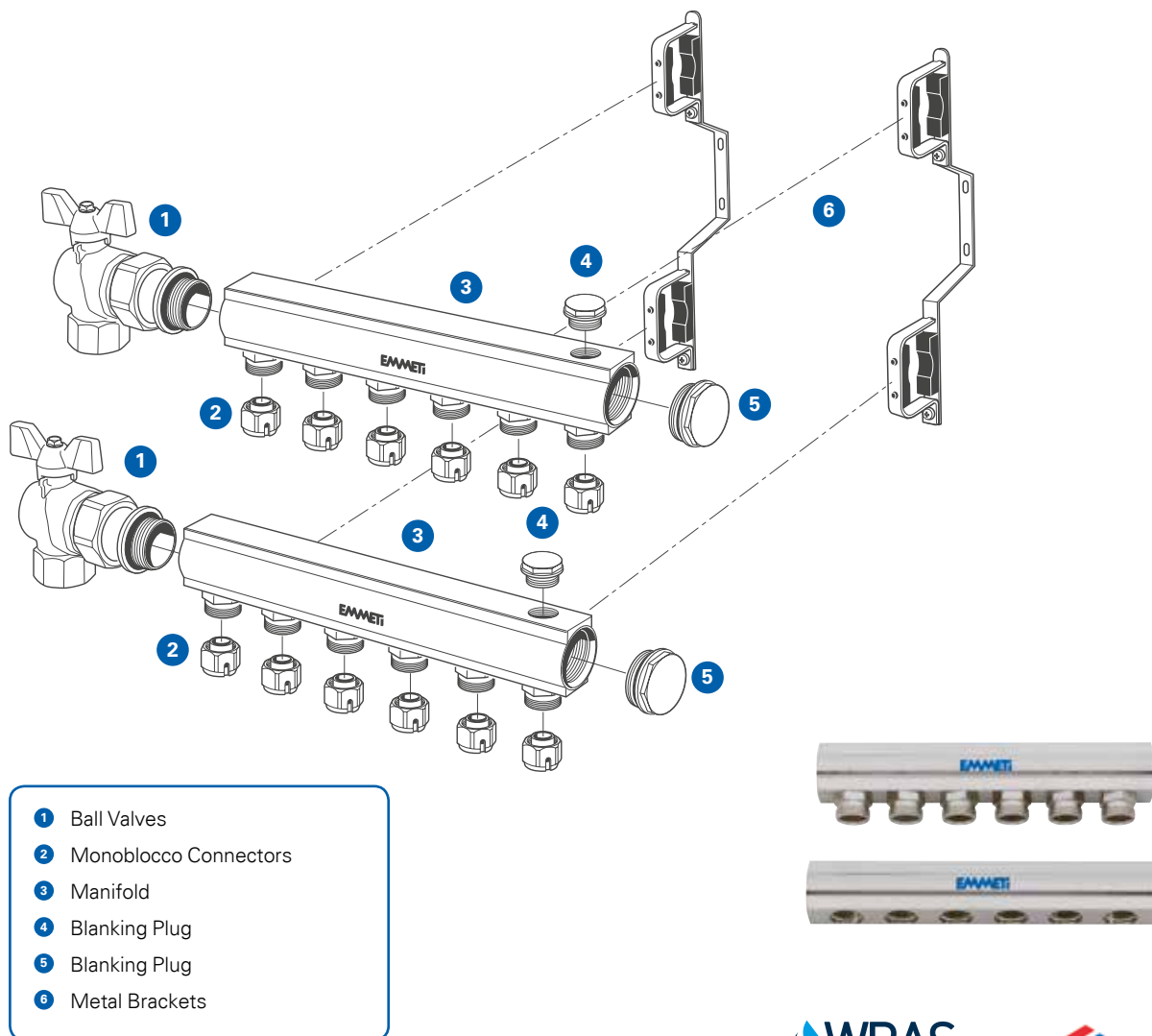
Also available are ball valves, mounting brackets, fittings and WRAS approved Monoblocco pipe connectors for a wide range of pipe types and sizes.

Inlet connection	¾", 1", 1¼" options
Outlet connections	24 x 19"
Outlet centres	¾" - 36mm & 50mm options 1" & 1¼" - 50mm
Ways	2 to 12
Extension	Yes, with coupling**
Individual isolating tap	No, distribution only
Identification of individual appliances	Red / Blue coding labels supplied
Maximum operating pressure	10 bar
Maximum operating temperature	110°C

\* Monoblocco connectors are available to suit pipe sizes 10 - 20mm and pipe types (PB, PE-Xa, PE-RT, MLCp, & copper)

\*\* Consider pressure drop and flow rate if going above 12 ways

#### Topway SN manifold assembly: exploded image of fully assembled kit



- 1 Ball Valves
- 2 Monoblocco Connectors
- 3 Manifold
- 4 Blanking Plug
- 5 Blanking Plug
- 6 Metal Brackets



Certificate No.  
1507073



For further details such as **product codes** and **prices** please refer to our **Emmeti Product Price List** or visit our website [www.emmeti.co.uk](http://www.emmeti.co.uk), or alternatively please call us on 01993 824900

## The Emmeti Manifold Range - Modular

### Modular simple distribution only manifold with 2-4 ways

A range of WRAS approved nickel plated, stamped brass manifold in 3/4" and 1" inlet sizes. Available in 2, 3 and 4 way options, which can be screwed together to create extended manifolds.

Modular manifolds are a cost effective way to install point to point plumbing in order to reduce concealed intermediate joints. It can be easily connected to any of the wide range of WRAS approved plastic pipes available, by using Emmeti Monoblocco single-piece connectors. It can also be used with conventional copper pipe if required.

Modular manifolds can be mounted using our slider rail system, or placed within a 'Termobox' plastic manifold cabinet.

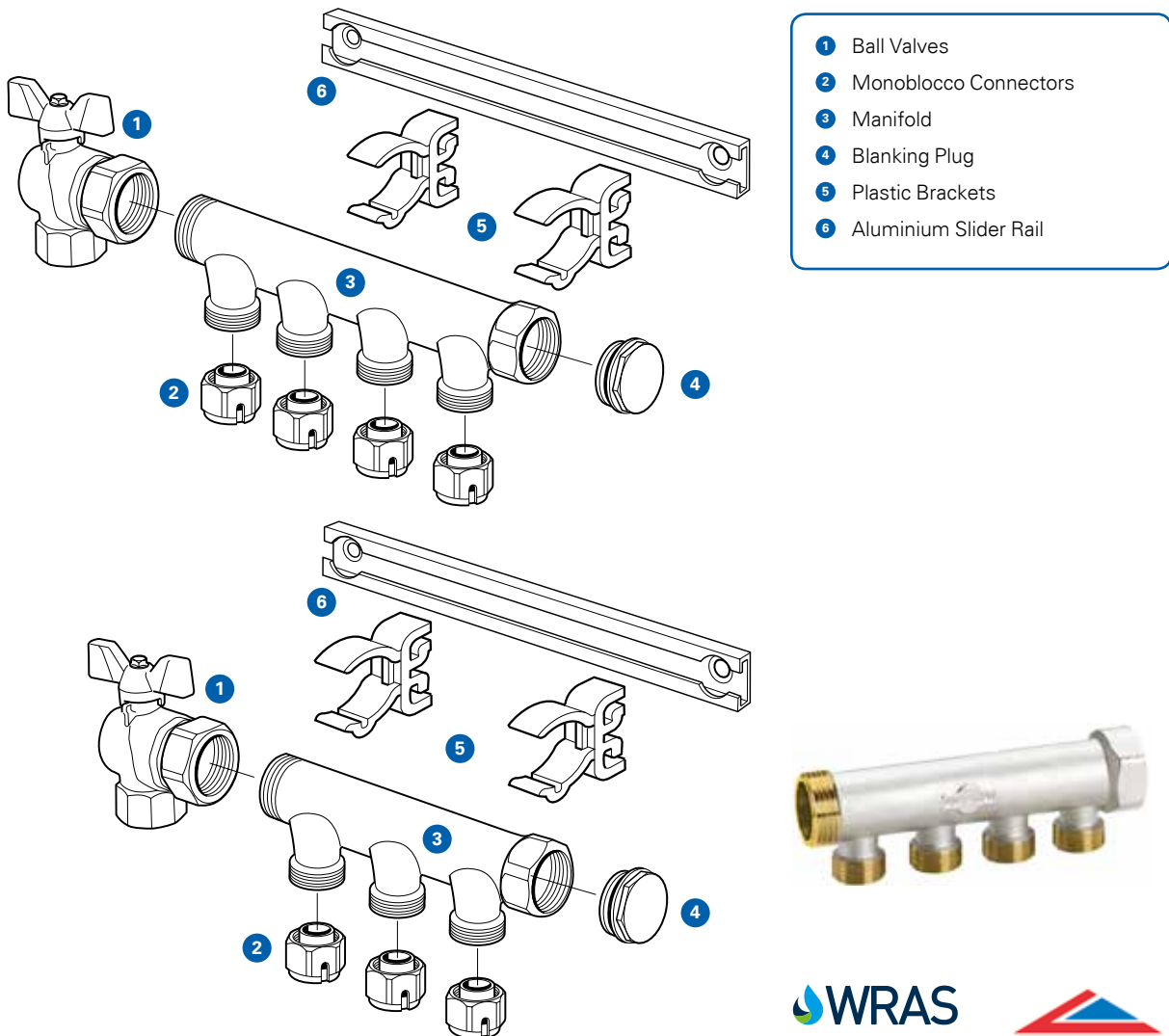
Also available are ball valves, mounting brackets, fittings and WRAS approved Monoblocco pipe connectors for a wide range of pipe types and sizes.

Inlet connection	3/4" & 1"
Outlet connections	24 x 19"
Outlet centres	36mm
Ways	2 to 4
Extension	Yes, screw together**
Individual isolating tap	No, distribution only
Maximum operating pressure	10 bar
Maximum operating temperature	110°C

\* Monoblocco connectors are available to suit pipe sizes 10 - 20mm and pipe types (PB, PE-Xa, PE-RT, MLCP, & copper)

\*\* Use thread sealant when extending.

### Modular manifold assembly: exploded image of fully assembled kit



Certificate No.  
1006046



## Hot and Cold Manifold Systems

### Manifold Accessories and Associated Products

#### Monoblocco connectors

Emmeti Monoblocco connectors are patented, WRAS and BBA approved single piece adaptors available to suit pipe sizes 10 - 20mm and pipe types (PB, PE-Xa, PE-RT, MLCP, & copper). The table below shows some examples of the pipes catered for, see our Price List for full details available from our website at [www.emmeti.co.uk](http://www.emmeti.co.uk)



#### Monoblocco connector for plastic PB polybutylene pipe, nickel-plated



Size mm	Thread
10	24x19
15	24x19

#### Monoblocco connector for copper pipe, nickel-plated



Size mm	Thread
10	24x19
15	24x19

#### Monoblocco connector for MLCP multilayer composite pipes, nickel-plated



Size mm	Thread
12 x 1.6mm	24 x 19
14 x 2mm	24 x 19
16 x 2mm	24 x 19
16 x 2.25mm	24 x 19
17 x 2mm	24 x 19
18 x 2mm	24 x 19
20 x 2mm	24 x 19
20 x 2.25mm	24 x 19
20 x 2.5mm	24 x 19

#### Monoblocco connector for PEX, Pure PE-RT and PP, nickel-plated

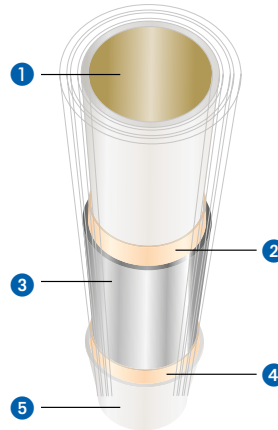


Size mm	Thread
12 x 1mm	24 x 19
12 x 2mm	24 x 19
14 x 2mm	24 x 19
15 x 1.5mm	24 x 19
15 x 1.7mm	24 x 19
15 x 2.5mm	24 x 19
16 x 2mm	24 x 19
16 x 2.2mm	24 x 19
17 x 2mm	24 x 19
18 x 2mm	24 x 19
18 x 2.5mm	24 x 19
20 x 2mm	24 x 19
20 x 2.8mm	24 x 19

For further details such as **product codes** and **prices** please refer to our **Emmeti Product Price List** or visit our website [www.emmeti.co.uk](http://www.emmeti.co.uk), or alternatively please call us on 01993 824900

## Manifold Accessories and Associated Products

### Gerpex MLCP



#### WRAS approved Multi-layer Composite Pipe for use in point to point systems.

Gerpex is the Emmeti manufactured, WRAS approved MultiLayer Composite Pipe for use in plumbing and heating systems. Produced at our purpose built pipe manufacturing facility in Italy, Gerpex is constructed using a 5 layer process;

- 1) An inner layer of extruded, cross linked polyethylene
- 2) A layer of high strength adhesive
- 3) A butt welded aluminium core
- 4) A second layer of high strength adhesive
- 5) An external layer of extruded, cross linked polyethylene (16-32mm), high density polyethylene (40-63mm)

Gerpex pipe is generally used as part of a press fitting system but can be used for point to point plumbing systems because of its high pressure and temperature ratings.

#### The Range

Available in rolls with diameters of DN 16, 20, 26, 32 and in bars DN 16, 20, 26, 32, 40, 50, 63, 75. The pipe on rolls is also available **pre-insulated** with closed cell expanded polyethylene sheath, cross-link coating to protect against heat loss and freezing.

- 1 Cross-linked polyethylene inner pipe (PE-Xb).
- 2 Bonding layer connecting the inner pipe to the aluminium pipe
- 3 Butt-welded aluminium pipe, thickness min 0.2 mm
- 4 Bonding layer connecting the outer pipe to the aluminium pipe
- 5 Cross-linked polyethylene outer pipe (PE-Xb), size 16-32  
High-density polyethylene outer pipe (PE-HD), size 40-75



Pre-Insulated and colour coded coils

### Termobox Manifold boxes



Integrated into the back panel of the box are two slider rails, representing an upper and lower manifold rail. Choosing a plastic bracket support kit allows you to match your manifold requirements exactly, including the facility to offset the flow manifold from the return manifold.

All walls have snap out panels, allowing the installer control of the manifold and pipe orientation in the box.

Size mm
310mm x 310mm x 90mm
460mm x 310mm x 90mm
610mm x 310mm x 90mm

## Hot and Cold Manifold Systems

### Manifold Accessories and Associated Products

#### Slider Rails and Brackets



Manifolds should always be mounted rather than being supported by the pipes to reduce the risk of leaks caused by movement from temperature changes in the pipes.

Plastic supporting brackets for use in a Termobox or on a slider rail:



For Topway & Topsan SN

For Multiplex & Modular

#### Metal Brackets



Heavy duty mounting solutions for TopSan and Topway SN manifolds.

#### Ball Valves



A wide range Ball valves are available, including male/female union and BSP connections as well as with temperature gauge options.

#### Blanking Plugs



For blanking the end of a manifold when not using as a through piece.

#### Spanners



These tools allow the installer to easily tighten Monoblocco connectors onto the manifold outlets in the 36 mm inter-axial space provided.

#### Couplings



Bridging piece



Straight swivel adaptors

Bridging piece for joining Multiplex manifolds together.

NB. Not suitable for Modular manifolds

Straight swivel adaptors for joining TopSan or Topway manifolds together.

NB. Consideration should be given to pressure drop and flow rate if going above 12 ways



## Case Study - Putney Bridge, London



The completed installation, post pressure testing and pre-plasterboarding.



An artists impression of the completed Putney Square site, courtesy of Barratts

### Site Summary

Putney Square is a new development of 1 & 2 bed apartments & a 3 bed penthouse, a total of 210 apartments.

### The Application

Hot and cold distribution plumbing, for bathrooms and kitchen.

### The Solution

The WRAS certified Topsan Plumbing Manifold was used. The white distribution pipe work was combined 10mm and 15mm PolyButylene, WRAS approved to BS7291. The manifold is supplied with 22mm PB pipe. The manifold was situated in a low cost recessed plastic cabinet, inside the metal frame stud wall, at an accessible height, generally in a small utility room.

The manifold pipe runs rise up into the ceiling void (the space below the concrete plank construction). Parts of the pipe runs are placed inside plastic conduit for protection and insulation. The pipes are bundled together, using nylon ties and anchored with little bolt and eye fixings.

### The Benefits

Point to point plumbing makes installation very fast, no tees and elbows to accommodate. The pipe is uninterrupted from the manifold to the point of use.

You will notice in the images a 7-way and 5-way are shown. This is typical, with the 7-way being cold water (for example toilets only need cold supply). The 10mm pipe, costing less than the 15mm pipe, and slightly faster to install, is used to supply terminal fittings such as basin taps and toilets, where high flow is not required.

The 5-way hot is supplying two basin taps, one bath, one shower and a kitchen tap.

The simple single point of management, with marked up hot and cold isolator taps makes post installation management very simple. This allows independent isolation of each outlet. This is accessible by the occupant, in case of emergency, and also a maintenance engineer, should he be called in. It creates a very neat and tidy 'Water Fuse Box'. The labelling is not shown here, adhesive labels in red and blue, with icons depicting the terminal fitting are fitted when commissioning.

### The Players

This was a Barratts North London site, and the M&E contractor was H20 Plumbing and Heating.

## Hot and Cold Manifold Systems

### Case Study - Telephone House, High Street, Southampton



A complete manifold set, the Multiplex is shown here. This has been pressure tested and is ready to be plaster boarded in.

#### Site Summary

This is a full refurbishment of an old office building, BT House, into 100 residential apartments, from 1 to 2 bedroom, with some penthouses.

#### The Application

Hot & Cold manifold system for bathrooms and kitchen outlets.

#### The Solution

The WRAS certified Multiplex Plumbing Manifold, with 15mm PolyButylene WRAS approved pipe to BS7291 used as distribution pipe work. The manifold is supplied with 22mm copper pipe. The manifold was situated in a low cost recessed plastic cabinet, inside the metal frame stud wall.

The manifold pipe runs rise up into the ceiling void (the space below the block and beam construction). It is placed inside a conduit which is insulated.

#### The Benefits

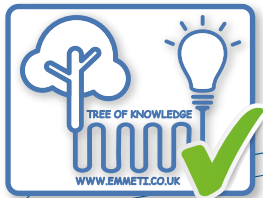
Simple single point of management, with marked up hot and cold isolator taps. This allows independent isolation of each outlet. This is accessible by the occupant, in case of emergency, and also a maintenance engineer, should he be called in.

#### The Players

This was a Linden Homes Southern site, and the M&E contractor was KA Watts.

## For More Information

For more information please visit our website where you will find our price list, Technical Product Guides and installation guides, or call us on 01993 824900.



**Price List 2016**

TopSan sanitary manifold with floating taps, nickel plated brass, 24x19 take-off connections

Code	Unit Price
0120202	25.00
0120203	25.00
0120204	25.00
0120205	25.00
0120206	25.00
0120207	25.00
0120208	25.00
0120209	25.00
0120210	25.00
0120211	25.00
0120212	25.00
0120213	25.00
0120214	25.00
0120215	25.00
0120216	25.00
0120217	25.00
0120218	25.00
0120219	25.00
0120220	25.00

For orders: Multi-Layer PEK, PEK PE, PEK PEK

PLEASE NOTE: For correct use of the hot and cold use for cold water. Separate flow pipes for hot and cold water. Please refer to the technical manual for details. Some models are approved for use with 15mm and 20mm connections. The manual and technical drawings are available for download on our website at www.emmeti.co.uk.

For WRAS approval: Multi-Layer Composite Pipe and plastic fittings are approved for use with 15mm and 20mm connections. For WRAS approval: Multi-Layer Composite Pipe and plastic fittings are approved for use with 15mm and 20mm connections.

**TopSan manifold assembly**

For more information please call us on 01993 824900 or view our website at www.emmeti.co.uk

Welcome to Emmeti UK

The last 80 years Emmeti have been a world class bathroom manufacturer. The hygiene UK drivers has focused on utilizing the expertise of our manifolds, in creating and testing systems with real world values, we will be unflinching testing before we are presented before you in this operation.

In recent years Emmeti UK have begun replacing other low impedance heating components; this coupled with a new array of pipe systems, utilizing the quality of our manifolds, has created the perfect choice for residential heating and plumbing systems.

Emmeti has a long history of innovation and we are proud to have developed a comprehensive range of simple yet beautifully competent products that by UK market standards will outlast other competitors. We offer a range of products that are designed to meet the highest international standards, complying with UK and ISO requirements and all products carry a guarantee and manufacturer's warranty. All Emmeti products are made to the highest international standards, complying with UK and ISO requirements and all products carry a guarantee and manufacturer's warranty.

All Emmeti products are made to the highest international standards, complying with UK and ISO requirements and all products carry a guarantee and manufacturer's warranty.

This certifies that

**EMMETI UK LTD.**

has had the undermentioned product examined, tested and found, when correctly installed, to comply with the requirements of the United Kingdom Water Supply (Water Fittings) Regulations and Scottish Water Byelaws.

**TOPSAN, MULTIPLEX, TOPWAY, TOPWAY SN & MODULAR MANIFOLDS  
FOR USE WITH MONOLOCCO FITTINGS**

The certificate by itself is not evidence of a valid WRAS Approval. Confirmation of the current status of an approval must be obtained from the WRAS Directory (www.wras.co.uk/directory)

The product so mentioned will be valid until the end of:

July 2020

1507073

Certificate No.

*J Finival*

Secretary

*K... ..*

Chairman, Product Assessment Group

Agreement Certificate  
**14/5087**  
Product Sheet 1

**EMMETI PLUMBING SYSTEMS**

**EMMETI MANIFOLDS AND FITTINGS**

**Emmeti UK Ltd**  
5 Tannery Yard  
Whitby Street  
Burford  
Oxfordshire OX18 4DW  
Tel: 01993 824900 Fax: 01993 824990  
email: sales@emmeti.co.uk  
website: www.emmeti.co.uk

This Agreement Certificate Product Sheet<sup>(1)</sup> relates to a range of Emmeti Manifolds and Fittings, for use in conjunction with polybutylene (PB), cross-linked polyethylene (PEX), raised-temperature polyethylene (PE-RT), multilayer and copper pipes, for hot water, underfloor heating and low and high temperature radiator systems, in domestic, commercial or public buildings.

(1) Hereinafter referred to as 'Certificate'.

**CERTIFICATION INCLUDES:**

- factors relating to compliance with Building Regulations where applicable
- factors relating to additional non-regulatory information where applicable
- independently verified technical specification
- assessment criteria and technical investigations
- design considerations
- installation guidance
- regular surveillance of production
- formal three-yearly review.

**KEY FACTORS ASSESSED**

**Safe working temperatures and pressures** – the products have adequate resistance to temperatures and pressures likely to be found in underfloor heating and low and high temperature radiator systems (see section 7).

**Chemical resistance** – the materials used in the products will be unaffected by soft, hard or aggressive potable water (see section 8).

**Durability** – the products will have a lifetime of at least 50 years (see section 12).

The BBA has awarded this Certificate to the company named above for the products described herein. These products have been assessed by the BBA as being fit for their intended use provided they are installed, used and maintained as set out in this Certificate.

On behalf of the British Board of Agrément

*Brian Chamberlain*

Brian Chamberlain  
Head of Approvals – Engineering

*Claire Curtis-Thomson*

Claire Curtis-Thomson  
Chief Executive

Date of First issue: 27 February 2014

Certificate amended 20 September 2014 to transposed Standards in section 1.1

The BBA is a UKAS accredited certification body – Number 112. The schedule of the current scope of accreditation for product certification is available in pdf format via the UKAS link on the BBA website at www.bba.co.uk

Readers are advised to check the validity and latest issue number of this Agreement Certificate by either referring to the BBA website or contacting the BBA direct.

©2014

Page 1 of 8



Respect the environment!

For a correct disposal, the different materials must be divided and collected according to the regulations in force.

Emmeti copyright

All rights are reserved. This publication nor any of its contents can be reproduced or publicised without Emmeti's written authorisation.

The data contained in this publication are subject to change at any time, for technical and commercial requirements.  
Emmeti are not responsible for eventual errors or inexactitudes



## Emmeti UK

6 Tannery Yard  
Witney Street  
Burford  
Oxfordshire  
OX18 4DQ

T +44 (0) 1993 824900  
F +44 (0) 1993 824990  
W [www.emmeti.co.uk](http://www.emmeti.co.uk)  
E [sales@emmeti.co.uk](mailto:sales@emmeti.co.uk)