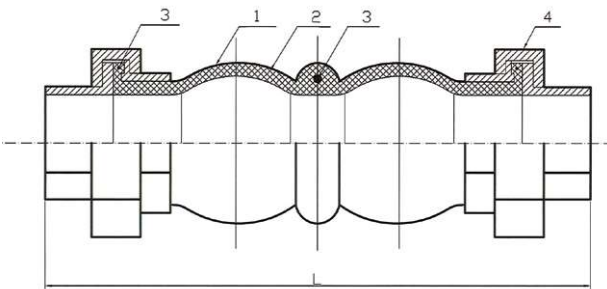




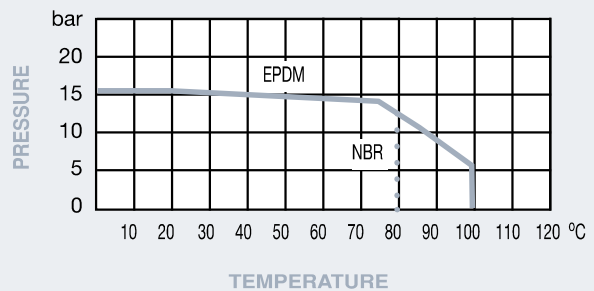
PN16 Screwed Flexible Connector

Features

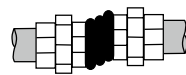
- Screwed BSP Taper BS21
- EPDM/NBR Body Option
- Galvanised Malleable Iron Union Ends
- Nylon Cord Fabric with Steel Reinforcement



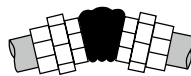
Pressure / Temperature



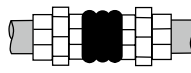
HD - Horizontal Displacement



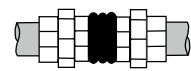
DA - Deflection Angular



Ext - Extension



Comp - Compression



DN	1/2"	3/4"	1"	1 1/4"	1 1/2"	2"	2 1/2"	3"
L	200	200	200	200	200	200	245	245
HD	22	22	22	22	22	22	24	24
DA	45°	45°	45°	45°	45°	45°	45°	45°
Ext	5.6	5.6	5.6	5.6	5.6	5.6	8.10	8.10
Comp	22	22	22	22	22	22	24	24
Kgs	0.70	0.90	1.15	1.40	1.65	2.25	3.25	4.20

Technical Data

Max Pressure 16 Bar

Working Temperature -20°C to +100°C EPDM
-20°C to +80°C NBR

N.	Part Name	Materials 400	Materials 410
1	Body Inner & Outer	EPDM	NBR
	Body Core	Natural Rubber	Natural Rubber
2	Reinforcement	Nylon Cord Wire	Nylon Cord Wire
3	Pressure Ring	Steel Wire	Steel Wire
4	Union End	Malleable Iron	Malleable Iron

Dimensions in mm

This data sheet is designed as a guide and should not be regarded as wholly accurate in every detail. We reserve the right to amend the specification of any product without notice.