

# Copper Press 90° M x F Bend (M-Profile)

## MCP 12



### Technical Data

- Working Pressure 16 Bar @ 95°C
- "M" profile press jaws or slings
- Approved tools include Novapress, REMS, Rothenberger and Ridgid

### Applicable Standards

- WRAS approved
- For use with type TX copper tubing conformant to EN 1057
- Manufactured to EN1254 standard

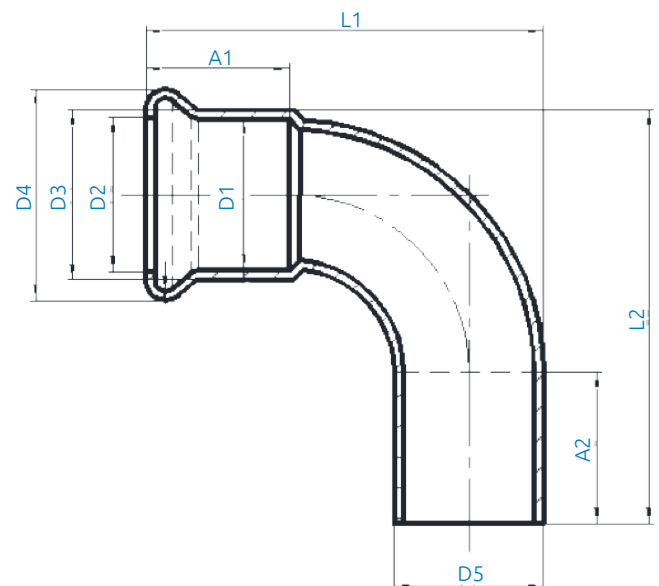


### Features & Benefits

- Durable and secure leak proof joint
- Braze free, permanent joint - no hot works required
- Huge time and resource savings
- 25 Year warranty
- Blue plastic film which will fall off when crimped for easy identification of pressed joint
- 2 point press
- Dust Covers

### Material Specifications

NO	Description	Materials
1	Body	Cu-DHP (CW024A)
2	Crimp indicator film	PVC, Blue
3	O-Ring	EPDM
4	Dust Cap	PE



### Product Codes and Dimensions

STOCK NO.	D1	D2	D3	D4	D5	A1	A2	L1	L2
27800	15	15.6	18	23	15	19	22	44.5	59
27801	22	22.8	25	31.3	22	20	23	57.5	71
27802	28	28.8	31	37.4	28	20	25	70	79.5
27803	35	35.7	38.3	44.7	35	28	25	81.5	92
27804	42	42.8	45.3	53.5	42	29	32	96	107.5
27805	54	54.8	57.3	65.3	54	34	37	123	133.5
27806	67	69.1	71.7	82.6	67	49	52	158	179
27807	76	78.6	81.1	94.4	76	49	54	184	201
27809	108	110.9	113.8	132.1	108	65	71	253	266