

Brass Coupler Multilayer Crimp Fitting MLF 01



Technical Data

- Working Pressure 0.8MPa
- Maximum Pressure 1.0MPa
- Working Temperature 80°C
- Maximum Temperature 95°C
- Compatible Press Profiles U / H / TH
- Suitable for water and neutral liquids

Applicable Standards

- Manufactured to EN Standard EN ISO 21003-3
- WRAS Approved
- Thread Standard ISO 228, ISO 7

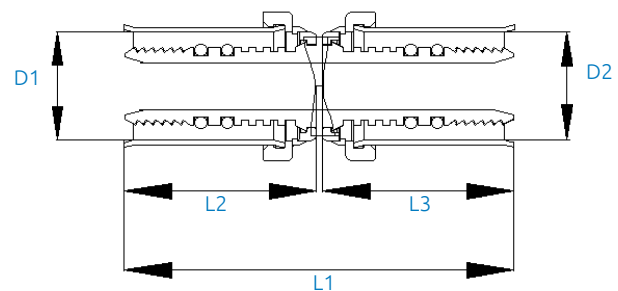


Features and Benefits

- Commercial quality, solid brass fittings for strength and robustness
- Each fitting has 2 or more O-rings giving an outstanding seal. Pipe inserts are not needed
- Flexible and formable pipe allows for a fast installation process with reduced fittings
- Extremely lightweight compared to metal pipes
- Pipe Warranty 25 Years
- Fitting Warranty 5 Years
- System Warranty 25 Years

Material Specifications

Description	Materials
Body	Brass - CW617N/CW602N
Plastic Collet	Plastic - PE, Blue
Crimping Sleeve	Stainless Steel - SUS304
O Ring	Rubber - EPDM



Product Codes and Dimensions

STOCK NO.	D1	D2	L1	L2	L3
51019	16	16	59.4	29.2	29.2
51028	20	16	59.4	29.2	29.2
51020	20	20	59.4	29.2	29.2
51040	25	16	61.2	31	29.2
51038	25	20	61.2	31	29.2
51018	25	25	63	31	31
51031	32	16	65.7	35.5	29.2
51032	32	20	65.7	35.5	29.2
51039	32	25	67.5	35.5	31
51022	32	32	72	35.5	35.5