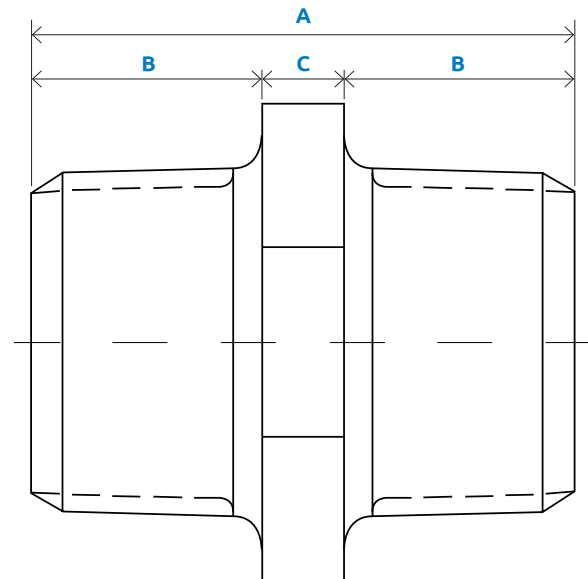


# Stainless Steel Hex Nipple



## Technical Data

- Max. Pressure:
  - 15mm - 28mm : 40 bar
  - 35mm - 54mm : 25 bar



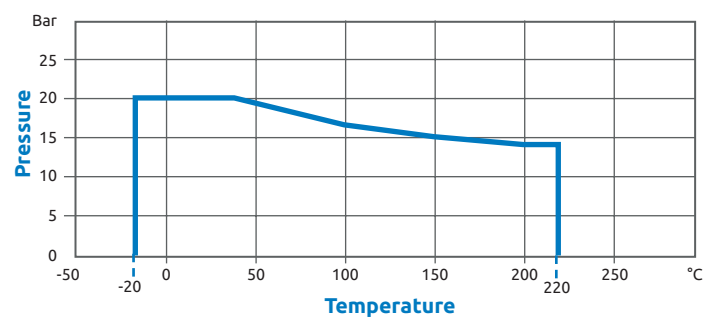
## Features and Benefits

- Made from CF8M (316) Stainless Steel material and conform to ISO 4144 standard.
- Threads are to BSP Taper (ISO 7/1) or NPT (ANSI B1.20.1).
- Material certificates available on request.
- Tested & inspected prior to despatch.
- 12 month warranty from date of installation.
- Manufactured in accordance with ISO9001:2015 quality system.

## Product Codes and Dimensions

Stock No.	Size	A	B	C	Kgs
39600	1/4"	32.0	13.4	5.2	0.021
39601	3/8"	36.7	14.8	7.1	0.035
39602	1/2"	41.7	16.4	8.8	0.050
39603	3/4"	45.0	18.5	8.0	0.070
39604	1"	48.1	18.6	10.9	0.119
39605	1 1/4"	53.4	20.6	12.2	0.180
39606	1 1/2"	55.5	21.5	12.5	0.217
39607	2"	64.2	25.6	13.0	0.328

Temperature (°C)	Non-shock maximum working pressure (bar)
-20 to 40	20
100	16.5
150	15
200	14
220	13.5



- Pressure for intermediate temperatures may be determined by the interpolation method.
- Temperatures indicated are those of internal fluid.
- Piping loads, stresses and moments are not taken into account.